

HPLC Application

ID No.: 21883

PLP and PA in Human sera/plasma on Gemini-NX 3u, C18, 100x4.6 by HPLC w Fluorescence Detection-3

Column: Gemini® 3 µm NX-C18 110 Å, LC Column 100 x 4.6 mm, Ea

Dimensions: 100 x 4.6 mm ID

Order No: 00D-4453-E0

Elution Type: Gradient

Eluent A: 20mmol/L Na₂HPO₄ + 1mL acetic acid in 1L DI Water

Eluent B: ACN : MeOH (70:30)

Gradient Profile:	Step No.	Time (min)	Pct A	Pct B
	1	0	95	5
	2	5	40	60
	3	5.1	5	95
	4	6	95	5
	5	7	95	5

Flow Rate: 1 mL/min

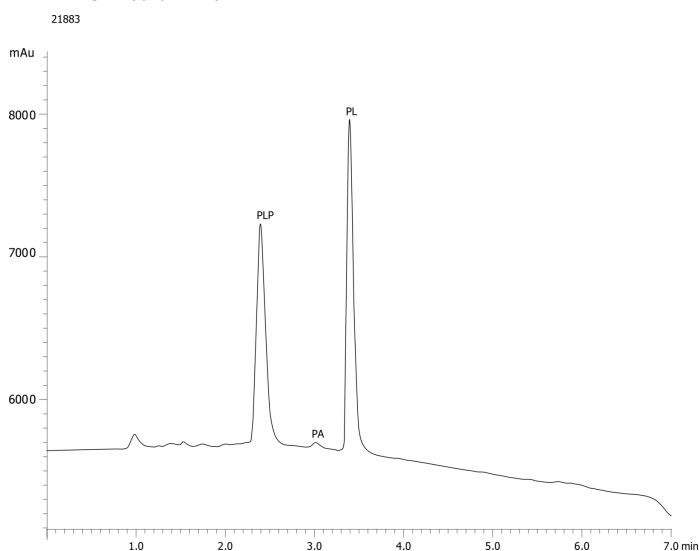
Col. Temp.: 35 °C

Detection: Fluorescence (FLUOR) @ Ex 360 nm (ambient)

Detector Info: Shimadzu RF-20A



Products used in this application:



ANALYTES:

- 1 Pyridoxal 5'-phosphate
Retention Time: 2.584 min
- 2 4-Pyridoxic acid
Retention Time: 3.143 min
- 3 Pyridoxal
Retention Time: 3.474 min

