

## Glucosinolates Standards on Luna HILIC 3 $\mu$ 100x4.6mm

**Column:** Luna® 3  $\mu$ m HILIC 200 Å, LC Column 100 x 4.6 mm, Ea

**Dimensions:** 100 x 4.6 mm ID

**Order No:** 00D-4449-E0

**Elution Type:** Isocratic

**Eluent A:** 30mM Ammonium Formate 85:15 ACN:H<sub>2</sub>O, ~pH 7

**Eluent B:** Acetonitrile

Gradient Profile:	Step No.	Time (min)	Pct A	Pct B
	1	8	70	30

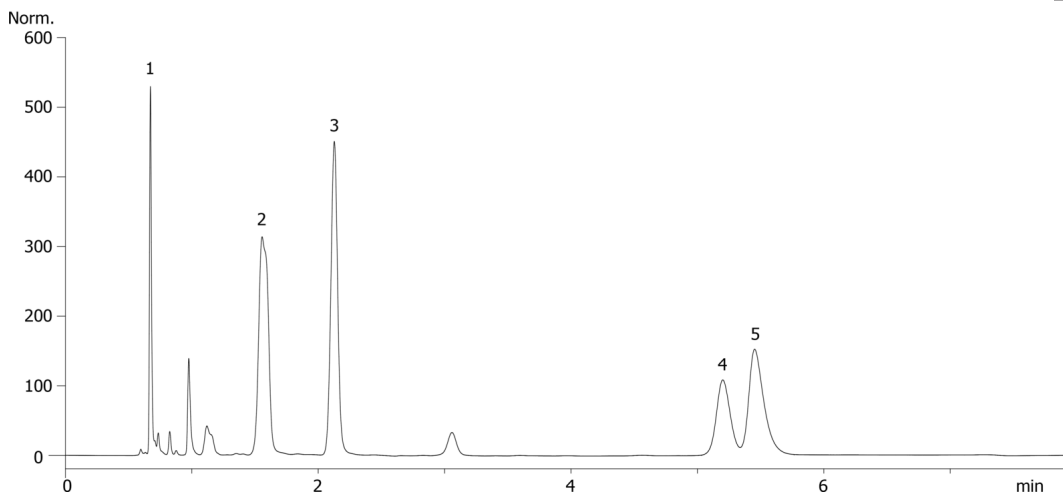
**Flow Rate:** 2 mL/min

**Col. Temp.:** 40 °C

**Detection:** UV-Vis Abs.-Variable Wave.(UV) @ 205 nm (25 °C)  
21941



Products used in this application:



### ANALYTES:

- 1** Sulforaphane  
Retention Time: 0.672 min
- 2** Glucotropaeolin  
Retention Time: 1.557 min
- 3** Sinigrin  
Retention Time: 2.127 min
- 4** Glucoraphanin  
Retention Time: 5.2 min
- 5** Glucoiberin  
Retention Time: 5.453 min

