

# HPLC Application

ID No.: 21951

## Mycotoxin analysis using Kinetex 2.6u Biphenyl 50x2.1mm

**Column:** Kinetex<sup>®</sup> 2.6  $\mu$ m Biphenyl 100  $\text{\AA}$ , LC Column 50 x 2.1 mm, Ea

**Dimensions:** 50 x 2.1 mm ID

**Order No:** 00B-4622-AN

**Elution Type:** Gradient

**Eluent A:** 5mM ammonium acetate with 0.1% acetic acid

**Eluent B:** Methanol with 5mM ammonium acetate with 0.1% acetic acid

<b>Gradient Profile:</b>	<b>Step No.</b>	<b>Time (min)</b>	<b>Pct A</b>	<b>Pct B</b>
	<b>1</b>	0	98	2
	<b>2</b>	2	98	2
	<b>3</b>	5	20	80
	<b>4</b>	5.2	2	98
	<b>5</b>	8	2	98
	<b>6</b>	8.01	98	2
	<b>7</b>	11	98	2

**Flow Rate:** 0.45 mL/min

**Col. Temp.:** ambient

**Detection:** Mass Spectrometer (MS) @ amu (ambient)

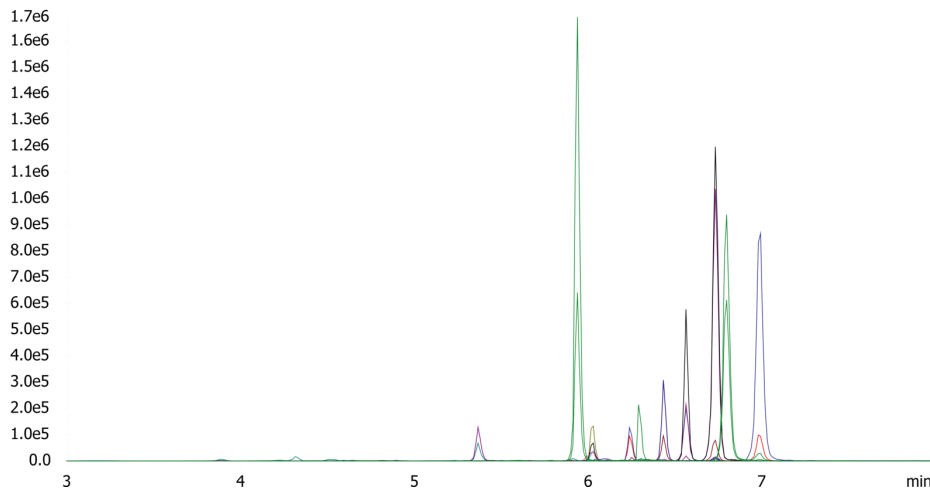
**Detector Info:**

21951

<a target="\_blank" href="https://sciex.com/products/mass-spectrometers?utm\_campaign=2019%20application%20search&utm\_source=phenomenex&utm\_medium=referral">SCIEX</a>



Products used in this application:



## Mycotoxin analysis using Kinetex 2.6u Biphenyl 50x2.1mm

### ANALYTES:

- 1 15-Acetyldeoxynivalenol
- 2 DAS
- 3 FB1
- 4 HT2 Toxin
- 5 FB2
- 6 T2 Toxin
- 7 Aflatoxin M1
- 8 Aflatoxin G2
- 9 Ochratoxin A
- 10 Aflatoxin G1
- 11 Aflatoxin B2
- 12 Aflatoxin B1

