

# HPLC Application

ID No.: 21999

## Steroid panel using Kinetex 2.6u Biphenyl 50x2.1mm

**Column:** Kinetex<sup>®</sup> 2.6  $\mu$ m Biphenyl 100 Å, LC Column 50 x 2.1 mm, Ea

**Dimensions:** 50 x 2.1 mm ID

**Order No:** 00B-4622-AN

**Elution Type:** Gradient

**Eluent A:** Water

**Eluent B:** Acetonitrile

Gradient Profile:	Step No.	Time (min)	Pct A	Pct B
	1	0	80	20
	2	5	40	60
	3	6	40	60

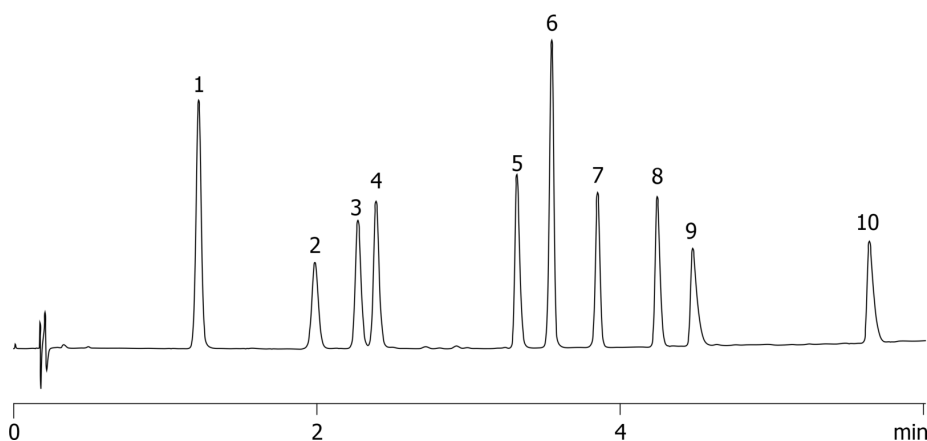
**Flow Rate:** 0.6 mL/min

**Col. Temp.:** ambient

**Detection:** UV-Vis Abs.-Diode Array (PDA) @ 220 nm (ambient)  
21999



Products used in this application:



## Steroid panel using Kinetex 2.6u Biphenyl 50x2.1mm

### ANALYTES:

- 1 Estriol
- 2 Hydrocortisone
- 3 Prednisone
- 4 Cortisone
- 5 Corticosterone
- 6 Beta-Estradiol
- 7 Cortisone Acetate
- 8 21-Hydroxyprogesterone
- 9 17-Hydroxyprogesterone
- 10 Deoxycorticosterone

