

HPLC Application

ID No.: 22153

Wine Polyphenols on Kinetex 2.6 μ m Biphenyl (100 ng/mL std)

Column: Kinetex[®] 2.6 μ m Biphenyl 100 \AA , LC Column 50 x 2.1 mm, Ea

Dimensions: 50 x 2.1 mm ID

Order No: 00B-4622-AN

Elution Type: Gradient

Eluent A: 5mM ammonium acetate w/ 0.5% acetic acid

Eluent B: 5mM ammonium acetate in ACN w/ 0.5% acetic acid

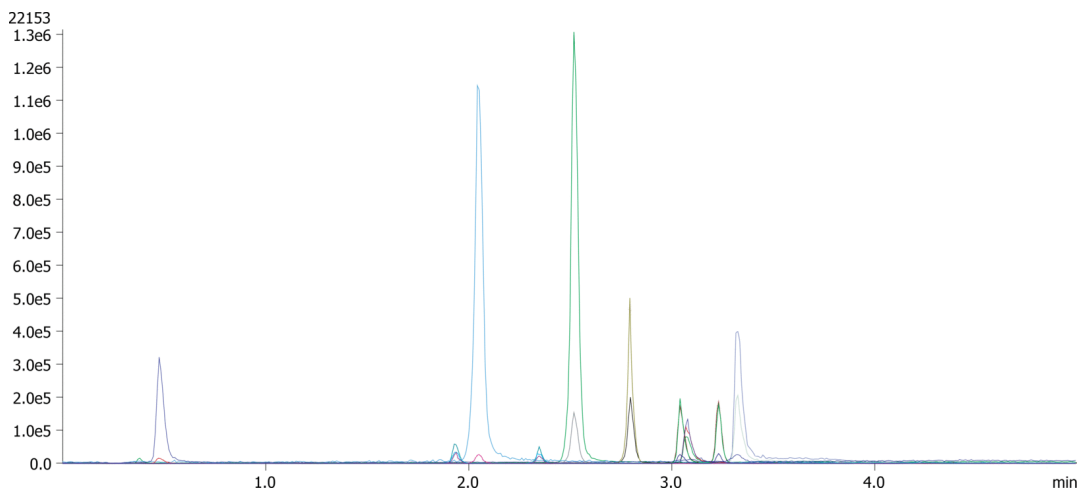
Gradient Profile:	Step No.	Time (min)	Pct A	Pct B
	1	0	98	2
	2	3	20	80
	3	5	20	80

Flow Rate: 0.5 mL/min

Col. Temp.: ambient

Detection: Tandem Mass Spec (MS-MS) @ (ambient)

Detector Info: API 5000



Products used in this application:



Wine Polyphenols on Kinetex 2.6 μ m Biphenyl (100 ng/mL std)

ANALYTES:

- 1 Gallic acid
- 2 Catechin
- 3 Caffeic acid
- 4 Epicatechin
- 5 p-Coumaric acid
- 6 Ferulic acid
- 7 trans-Resveratrol
- 8 Myrcetin
- 9 cis-Resveratrol
- 10 Quercetin

