

THC and metabolites by LCMS using Kinetex 5u Biphenyl 50x2.1mm

Column: Kinetex® 5 µm Biphenyl 100 Å LC Column 50 x 2.1 mm, Ea

Dimensions: 50 x 2.1 mm ID

Order No: 00B-4627-AN

Elution Type: Gradient

Eluent A: 0.1% formic acid

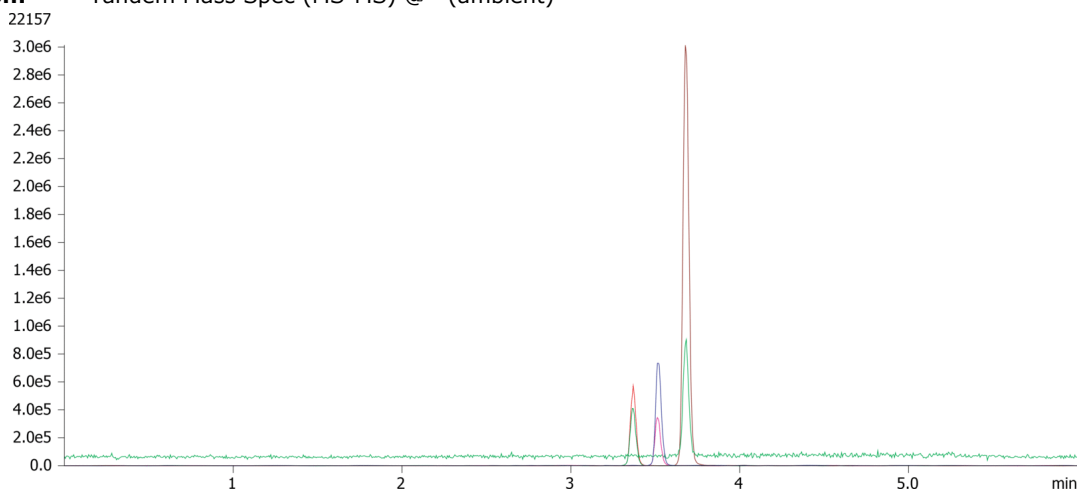
Eluent B: Methanol with 0.1% formic acid

Gradient Profile:	Step No.	Time (min)	Pct A	Pct B
	1	0	50	50
	2	2.5	5	95
	3	4	5	95
	4	4.1	50	50
	5	5.5	50	50

Flow Rate: 0.4 mL/min

Col. Temp.: 40 °C

Detection: Tandem Mass Spec (MS-MS) @ (ambient)



ANALYTES:

- 1** THC-OH
Retention Time: 3.4 min
- 2** THC-COOH
Retention Time: 3.5 min
- 3** THC
Retention Time: 3.7 min



Products used in this application:

