

## Analysis of crude peptide mixture on Aeris PEPTIDE 2.6u XB-C18 150x4.6mm

**Column:** Aeris™ 2.6 µm PEPTIDE XB-C18 100 Å, LC Column 150 x 4.6 mm, Ea

**Dimensions:** 150 x 4.6 mm ID

**Order No:** 00F-4505-E0

**Elution Type:** Gradient

**Eluent A:** Water with 0.1% TFA

**Eluent B:** Acetonitrile with 0.1% TFA

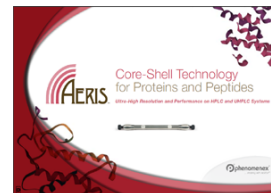
Gradient Profile:	Step No.	Time (min)	Pct A	Pct B
	1	0	85	15
	2	10	5	95

**Flow Rate:** 1 mL/min

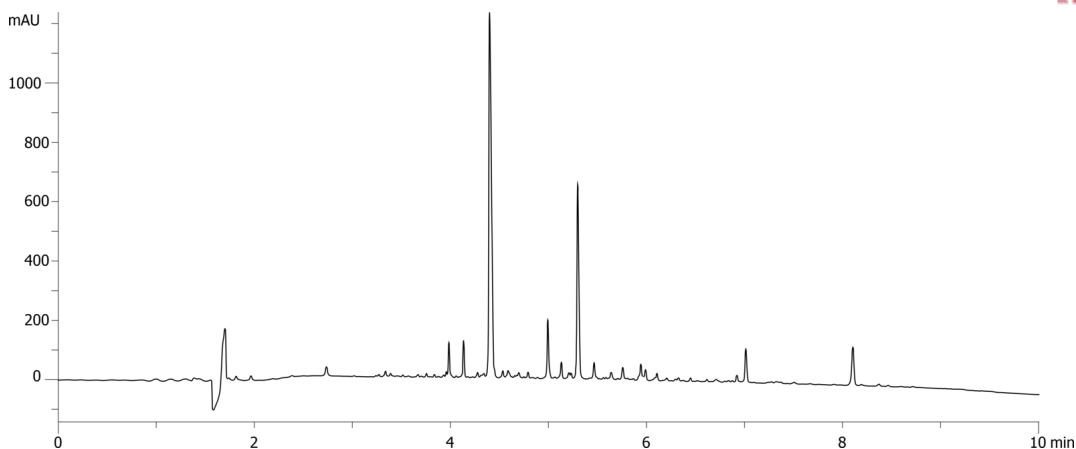
**Col. Temp.:** ambient

**Detection:** UV-Vis Abs.-Variable Wave.(UV) @ 210 nm (ambient)

22707



Products used in this application:



### ANALYTES:

- 1 Crude peptide mix

