

Vitamin B1 chromatogram of endogenous level of human whole blood

Column: Luna® 5 µm C18(2) 100 Å, LC Column 50 x 3 mm, Ea

Dimensions: 50 x 3 mm ID

Order No: 00B-4252-Y0

Elution Type: Gradient

Eluent A: 25 mM Na₂HPO₄ in water pH7.0

Eluent B: MeOH

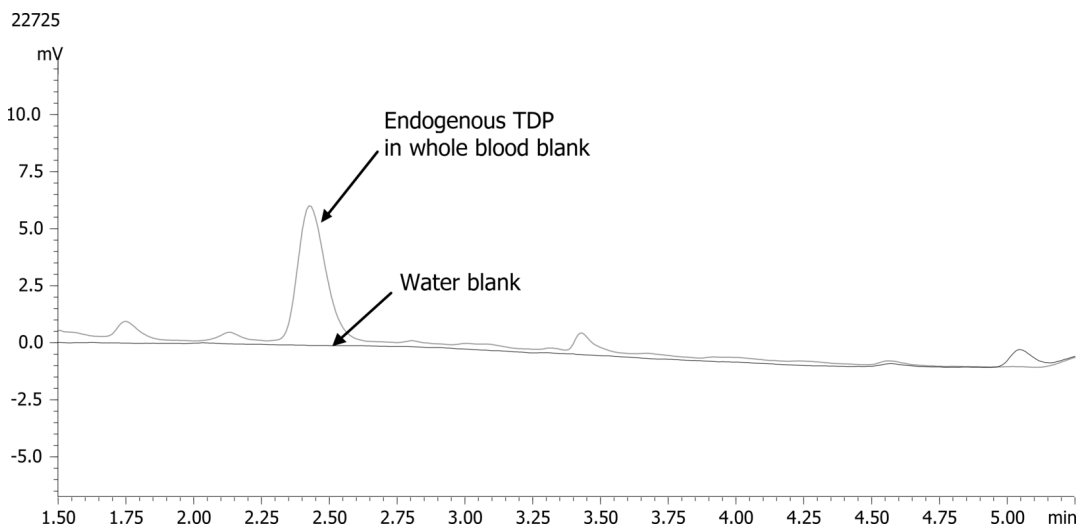
Gradient Profile:	Step No.	Time (min)	Pct A	Pct B
	1	0.01	95	5
	2	1.8	85	15
	3	3.5	50	50
	4	4.5	50	50
	5	4.51	95	5
	6	6.5	95	5

Flow Rate: 600 mL/min

Col. Temp.: 28 °C

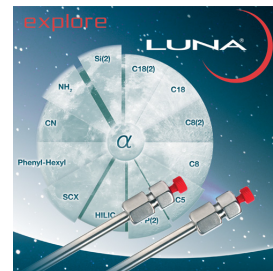
Detection: Fluorescence (FLUOR) @ (ambient)

Detector Info: Shimadzu RF-20A



ANALYTES:

- 1 Thiamin Diphosphate (TDP)
Retention Time: 2.42 min
- 2 Thiamin
Retention Time: 2.86 min
- 3 Thiamin Monophosphate (TMP)
Retention Time: 3.5 min



Products used in this application:

