

Oxytocin and ARG-Vasopressin Chromatogram

Column: Luna® 3 µm PFP(2) 100 Å, LC Column 50 x 2 mm, Ea

Dimensions: 50 x 2 mm ID

Order No: 00B-4447-B0

Elution Type: Gradient

Eluent A: 0.1%FA in water

Eluent B: 0.1%FA in 50:50 MeOH:Acetonitrile

Gradient Profile:	Step No.	Time (min)	Pct A	Pct B
	1	0	90	10
	2	0.2	90	10
	3	0.5	70	30
	4	3.5	70	30
	5	3.51	30	70
	6	4	30	70
	7	4.01	90	10
	8	5	90	10

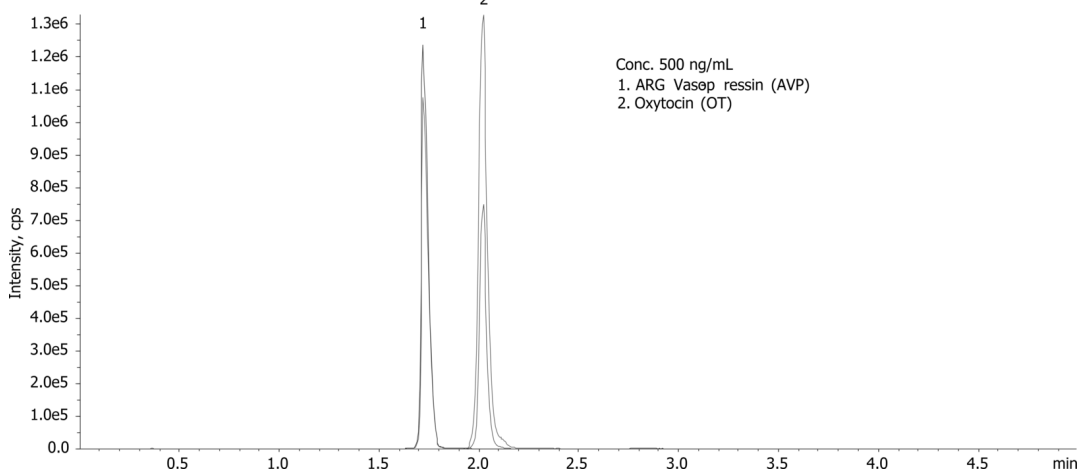
Flow Rate: 0.45 mL/min

Col. Temp.: ambient

Detection: Tandem Mass Spec (MS-MS) @ (40 °C)

Detector Info: <a target="_blank"

href="https://sciex.com/products/mass-spectrometers?utm_campaign=2019%20application%20search&utm_source=phenomenex&utm_medium=referral">SCIEX<



Products used in this application:



ANALYTES:

1 Oxytocin

Retention Time: 2.02 min

2 ARG-Vasopressin

Retention Time: 1.72 min



Sample Preparation Details

for HPLC Application ID No.: 22770

Oxytocin and ARG-Vasopressin Chromatogram

PRODUCT DESCRIPTION:

StrataTM-X-CW 33 μ m Polymeric Weak Cation, 30 mg / well, 96-Well Plates , 2/Pk

Order No.: 8E-S035-TGB

SOLID PHASE EXTRACTION (SPE) PROCEDURE:

Note: The solvent volumes shown below are for a 30 mg bed mass.

The solvent volumes will need to be adjusted for a smaller or larger bed mass.

Condition:

Load:

Wash:

Dry:

3-5 min

Elute:

Final Prep and Analysis:

Inject: 10 μ L on HPLC Tandem Mass Spec (MS-MS) @ (40°C)

ANALYTES:	Spiked Conc. (ng/mL)	Log P	pKa	% Rec	%RSC (n=0)
1 Oxytocin	0				
2 ARG-Vasopressin	0				

Note: This method is designed as a convenient starting point for further investigation and can be tailored to meet your extraction goals.
Call your local Phenomenex Representative for assistance in method development and optimization techniques.

©2025 Phenomenex Inc. All rights reserved.

For more information contact your Phenomenex Representative at info@phenomenex.com



Phenomenex products are available worldwide.

www.phenomenex.com.cn

info@phenomenex.com