

# HPLC Application

ID No.: 22778

## 100% Aqueous Stability - Kinetex 5u EVO C18 50x4.6mm

**Column:** Kinetex<sup>®</sup> 5 $\mu$ m EVO C18 100 Å, LC Column 50 x 4.6 mm, Ea

**Dimensions:** 50 x 4.6 mm ID

**Order No:** 00B-4633-E0

**Elution Type:** Gradient

**Eluent A:** 20mM Sodium phosphate pH 2.5

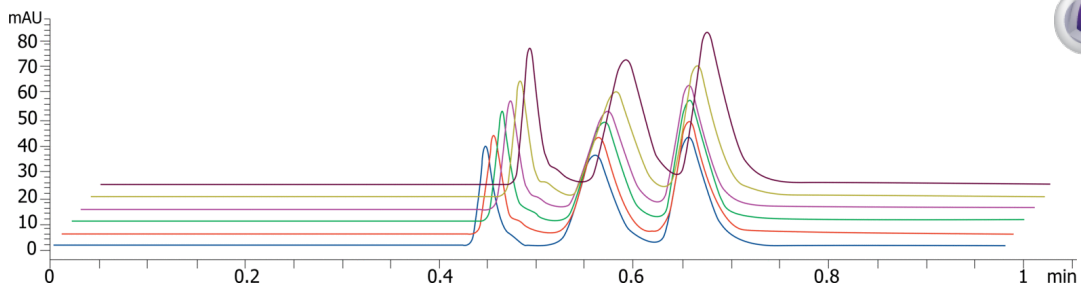
Gradient Profile:	Step No.	Time (min)	Pct A
	1	0	100

**Flow Rate:** 1 mL/min

**Col. Temp.:** 30 °C

**Detection:** UV-Vis Abs.-Variable Wave.(UV) @ 270 nm (ambient)

22778



Products used in this application:



### ANALYTES:

- 1 Norepinephrine
- 2 Epinephrine
- 3 Dopamine

