

EPA 539 using Kinetex 5u EVO C18 100x3.0mm

Column: Kinetex® 5µm EVO C18 100 Å, LC Column 100 x 3.0 mm, Ea

Dimensions: 100 x 3 mm ID

Order No: 00D-4633-Y0

Elution Type: Gradient

Eluent A: 0.2% ammonium hydroxide

Eluent B: Methanol with 0.2% ammonium hydroxide

Gradient Profile:	Step No.	Time (min)	Pct A	Pct B
	1	0	65	35
	2	0.6	35	65
	3	7.5	35	65
	4	8.5	15	85
	5	13	15	85
	6	13.01	35	65
	7	15	35	65



Products used in this application:



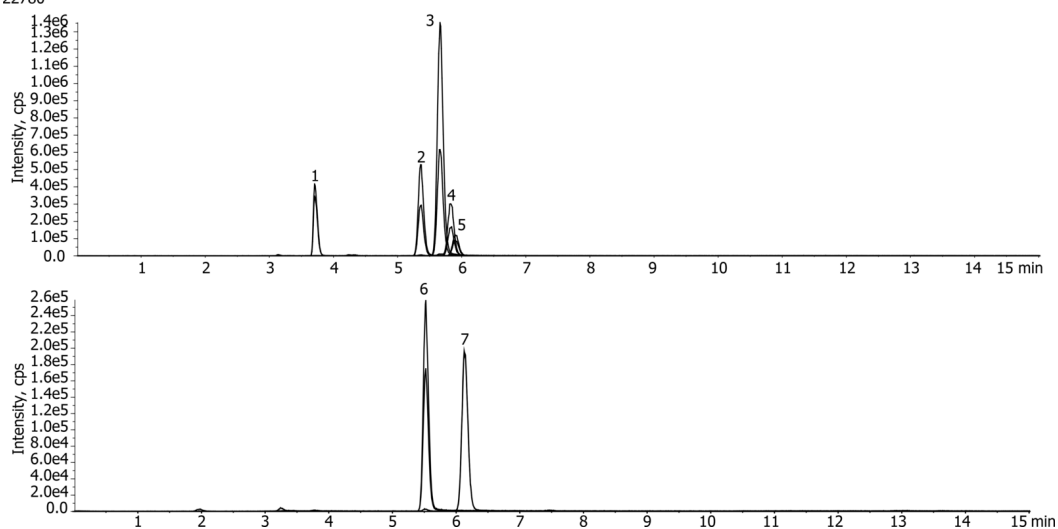
Flow Rate: 0.3 mL/min

Col. Temp.: 30 °C

Detection: Electrospray Mass Spec (ESMS) @ (40 °C)

Detector Info:

22780



ANALYTES:

- 1** Estriol
Retention Time: 3.71 min
- 2** Equilin
Retention Time: 5.39 min
- 3** Estrone
Retention Time: 5.67 min
- 4** 17-B-Estradiol
Retention Time: 5.84 min
- 5** 17-a-Ethynylestradiol
Retention Time: 5.9 min
- 6** Androstenedione
Retention Time: 5.52 min
- 7** Testosterone
Retention Time: 6.13 min

