

# HPLC Application

ID No.: 22883

## 25-OH-Vitamin D2 in Human Serum using Novum SLE and Kinetex 2.6µm F5 100 x 4.6mm

**Column:** Kinetex® F5 2.6µm 100 Å, LC Column 100 x 4.6 mm, Ea

**Dimensions:** 100 x 4.6 mm ID

**Order No:** 00D-4723-E0

**Elution Type:** Gradient

**Eluent A:** 0.1% FA in Water

**Eluent B:** 0.1%FA in MeOH

| Gradient Profile: | Step No. | Time (min) | Pct A | Pct B |
|-------------------|----------|------------|-------|-------|
|                   | 1        | 0          | 15    | 85    |
|                   | 2        | 5          | 15    | 85    |
|                   | 3        | 5.01       | 0     | 100   |
|                   | 4        | 6.5        | 0     | 100   |
|                   | 5        | 6.51       | 15    | 85    |
|                   | 6        | 8          | 15    | 85    |

**Flow Rate:** 0.75 mL/min

**Col. Temp.:** ambient

**Detection:** Tandem Mass Spec (MS-MS) @ (ambient)

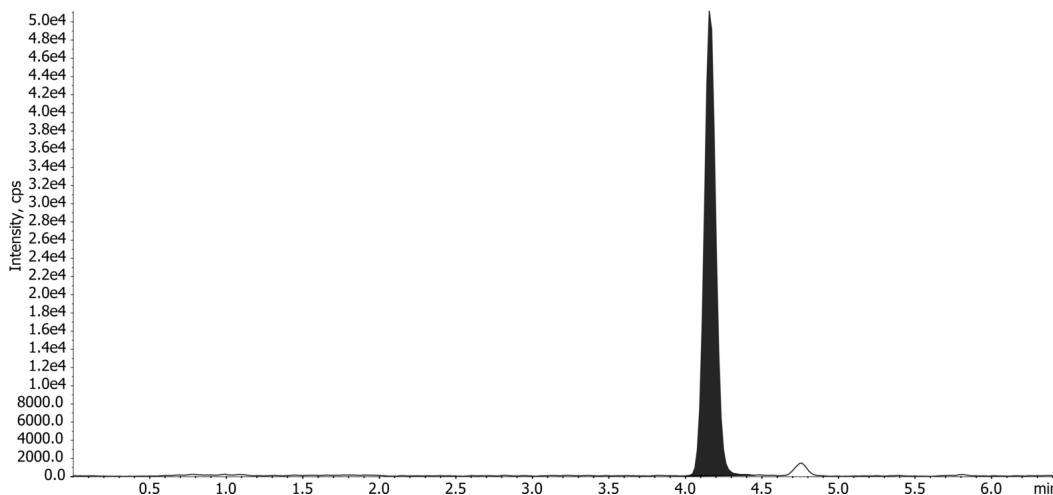
**Detector Info:** <a target="\_blank"

22883

href="https://sciex.com/products/mass-spectrometers?utm\_campaign=2019%20application%20search&utm\_source=phenomenex&utm\_medium=referral">SCIEX<



Products used in this application:



### ANALYTES:

1 25-OH-Vitamin D2

Retention Time: 4.16 min

