

HPLC Application

ID No.: 22885

25-OH-epi-Vitamin D3 in Human Serum using Novum SLE and Kinetex 2.6µm F5 100 x 4.6mm

Column: Kinetex[®] F5 2.6µm 100 Å, LC Column 100 x 4.6 mm, Ea

Dimensions: 100 x 4.6 mm ID

Order No: 00D-4723-E0

Elution Type: Gradient

Eluent A: 0.1% FA in Water

Eluent B: 0.1%FA in MeOH

| Gradient Profile: | Step No. | Time (min) | Pct A | Pct B |
|-------------------|----------|------------|-------|-------|
| | 1 | 0 | 15 | 85 |
| | 2 | 5 | 15 | 85 |
| | 3 | 5.01 | 0 | 100 |
| | 4 | 6.5 | 0 | 100 |
| | 5 | 6.51 | 15 | 85 |
| | 6 | 8 | 15 | 85 |



Products used in this application:



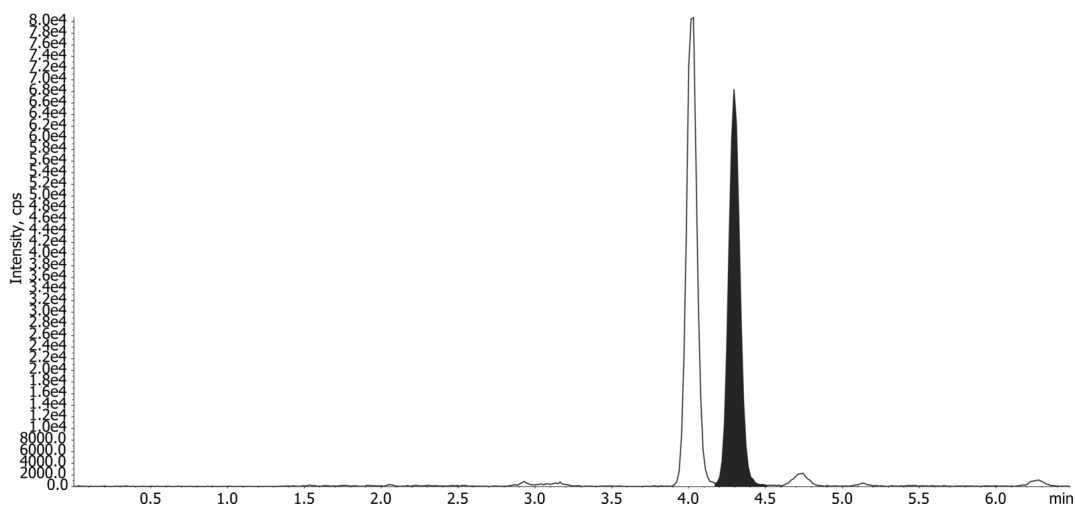
Flow Rate: 0.75 mL/min

Col. Temp.: ambient

Detection: Tandem Mass Spec (MS-MS) @ (ambient)

Detector Info: SCIEX<

22885



ANALYTES:

1 25-OH-Epi Vitamin-D3

Retention Time: 4.3 min

