

Curcuminoids on Kinetex 2.6u C18 150x4.6mm

Column: Kinetex® 2.6 µm C18 100 Å, LC Column 150 x 4.6 mm, Ea

Dimensions: 150 x 4.6 mm ID

Order No: 00F-4462-E0

Elution Type: Gradient

Eluent A: 0.1% Formic Acid in Water

Eluent B: Acetonitrile

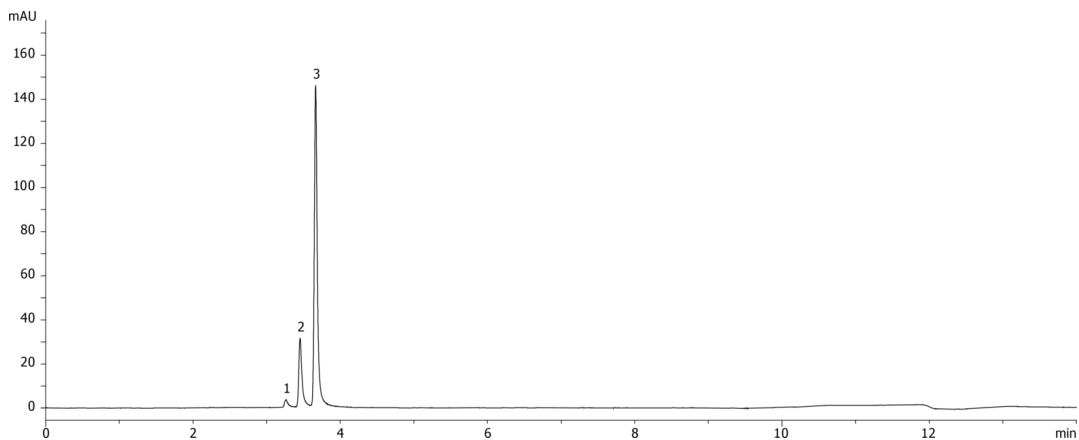
Gradient Profile:	Step No.	Time (min)	Pct A	Pct B
	1	0	45	55
	2	8	30	70
	3	9	0	100
	4	10	0	100
	5	11	45	55
	6	13	45	55

Flow Rate: 1 mL/min

Col. Temp.: ambient

Detection: UV-Vis Abs.-Variable Wave.(UV) @ 425 nm (ambient)

22914



ANALYTES:

1 Bis-demethoxy-curcumin

Retention Time: 3.094 min

2 Demethoxy-curcumin

Retention Time: 3.286 min

3 Curcumin

Retention Time: 3.496 min



Products used in this application:

