

# HPLC Application

ID No.: 22926

## Hypericin and Pseudohypericin Extract

**Column:** Luna® 5 µm C18(2) 100 Å, LC Column 150 x 4.6 mm, Ea

**Dimensions:** 150 x 4.6 mm ID

**Order No:** 00F-4252-E0

**Elution Type:** Isocratic

**Eluent A:** Acetonitrile

**Eluent B:** Methanol

**Eluent C:** 0.1 M Ammonium Acetate

Gradient Profile:	Step No.	Time (min)	Pct A	Pct B	Pct C
1	1	20	50	30	20

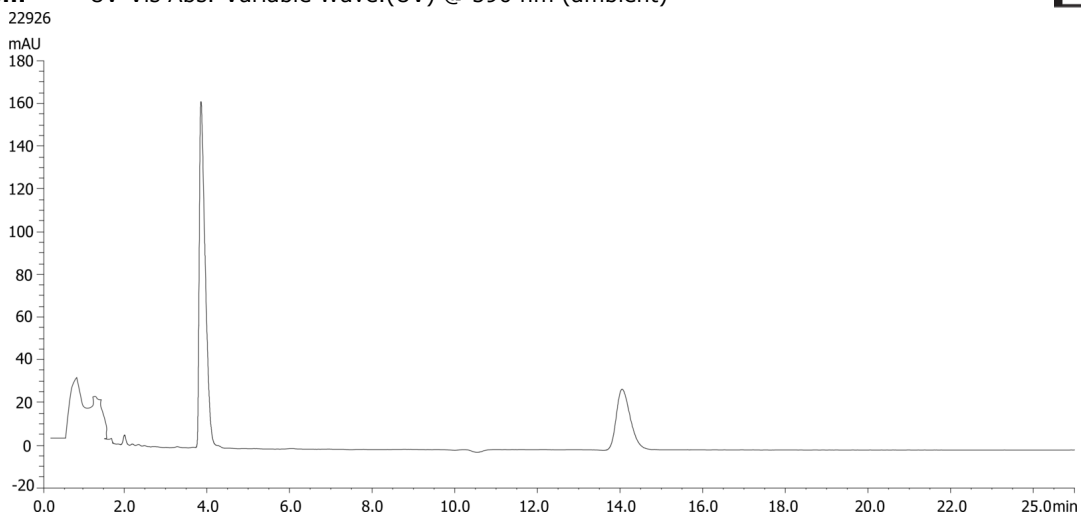
**Flow Rate:** 1.5 mL/min

**Col. Temp.:** 21 °C

**Detection:** UV-Vis Abs.-Variable Wave.(UV) @ 590 nm (ambient)



Products used in this application:



### ANALYTES:

- 1** Pseudohypericin  
Retention Time: 3.9 min
- 2** Hypericin  
Retention Time: 13.9 min