

HPLC Application

ID No.: 22951

Steroids mix using Luna 5u C18(2) 150x4.6mm

Column: Luna® 5 µm C18(2) 100 Å, LC Column 150 x 4.6 mm, Ea

Dimensions: 150 x 4.6 mm ID

Order No: 00F-4252-E0

Elution Type: Isocratic

Eluent A: 0.1% H3PO4 in Water

Eluent B: Acetonitrile

Eluent C: Methanol

Gradient Profile:	Step No.	Time (min)	Pct A	Pct B	Pct C
1	1	0	54	35	11

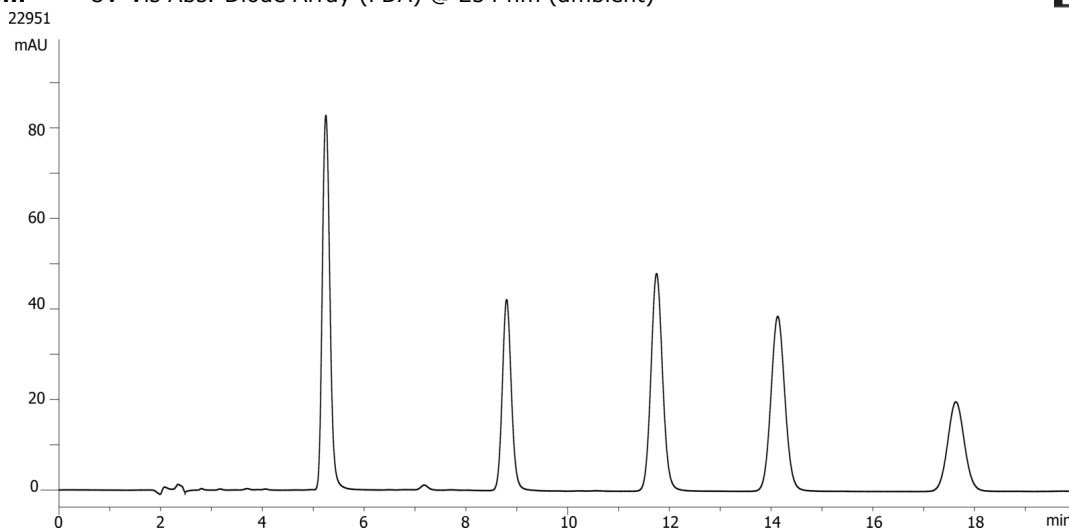
Flow Rate: 1 mL/min

Col. Temp.: ambient

Detection: UV-Vis Abs.-Diode Array (PDA) @ 254 nm (ambient)



Products used in this application:



ANALYTES:

- 1 Hydrocortisone
- 2 Corticosterone
- 3 11-a-Hydroxyprogesterone
- 4 Cortisone acetate
- 5 11-Ketoprogesterone