

Polymer additives on Kinetex 2.6u EVO C18 50X3.0 mm

Column: Kinetex® 2.6µm EVO C18 100 Å, LC Column 50 x 3.0 mm, Ea

Dimensions: 50 x 3 mm ID

Order No: 00B-4725-Y0

Elution Type: Gradient

Eluent A: DI water

Eluent B: MeOH

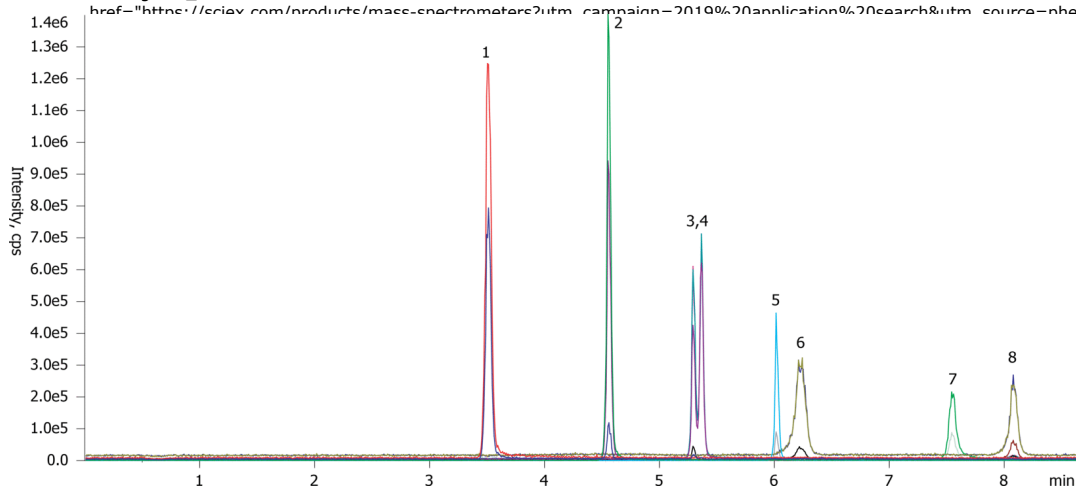
Gradient Profile:	Step No.	Time (min)	Pct A	Pct B
	1	0.01	60	40
	2	5	10	90
	3	7	10	90
	4	7.01	60	40
	6	8.5	60	40

Flow Rate: 0.4 mL/min

Col. Temp.: ambient

Detection: Tandem Mass Spec (MS-MS) @ (ambient)

Detector Info: SCIEX



ANALYTES:

- 1 Diethyl phthalate
Retention Time: 3.5 min
- 2 Dipropyl phthalate
Retention Time: 4.5 min
- 3 Diisobutyl phthalate
Retention Time: 5.2 min
- 4 Dibutyl phthalate
Retention Time: 5.3 min
- 5 Dicyclohexyl phthalate
Retention Time: 5.9 min
- 6 Di-n-octyl phthalate
Retention Time: 6.1 min
- 7 Chimassorb-81
Retention Time: 7.4 min
- 8 Bis(2-ethylhexyl) phthalate
Retention Time: 8 min



Products used in this application:

