

## Cisapride on LUX Amylose-1 5u 250x4.6mm in NP

**Column:** Lux® 5 µm Amylose-1, LC Column 250 x 4.6 mm, Ea

**Dimensions:** 250 x 4.6 mm ID

**Order No:** 00G-4732-E0

**Elution Type:** Isocratic

**Eluent A:** 0.1% DEA in Hexane

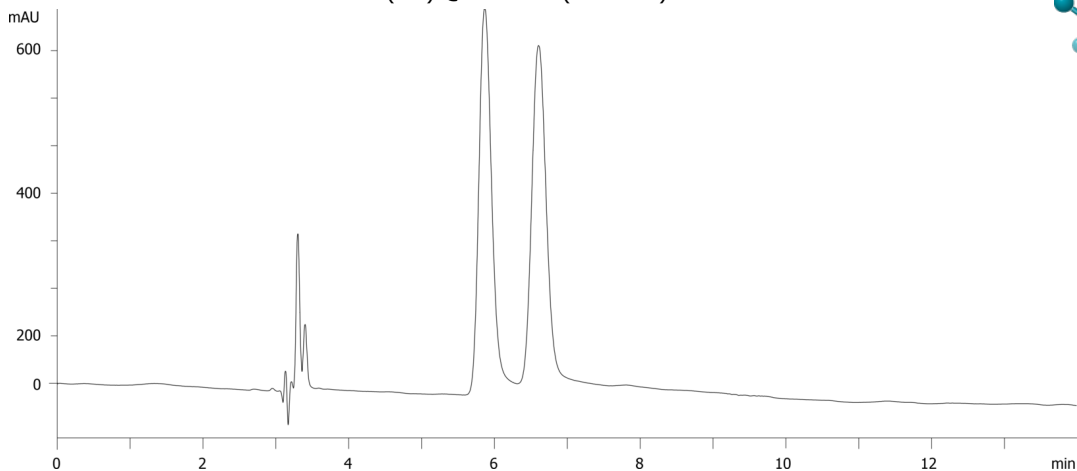
**Eluent B:** 0.1% DEA in IPA

| Gradient Profile: | Step No. | Time (min) | Pct A | Pct B |
|-------------------|----------|------------|-------|-------|
|                   | 1        | 10         | 60    | 40    |

**Flow Rate:** 1 mL/min

**Col. Temp.:** ambient

**Detection:** UV-Vis Abs.-Variable Wave.(UV) @ 220 nm (ambient)



Products used in this application:



### ANALYTES:

1 Cisapride

Retention Time: 5.867 min

2 Cisapride

Retention Time: 6.606 min

