

HPLC Application

ID No.: 23163

Zolmitriptan and enantiomer on Lux Amylose 1 USP MP

Column: Lux[®] 5 μ m Amylose-1, LC Column 250 x 4.6 mm, Ea

Dimensions: 250 x 4.6 mm ID

Order No: 00G-4732-E0

Elution Type: Isocratic

Eluent A: Hexane 0.3%DEA

Eluent B: 2-propanol 0.3%DEA

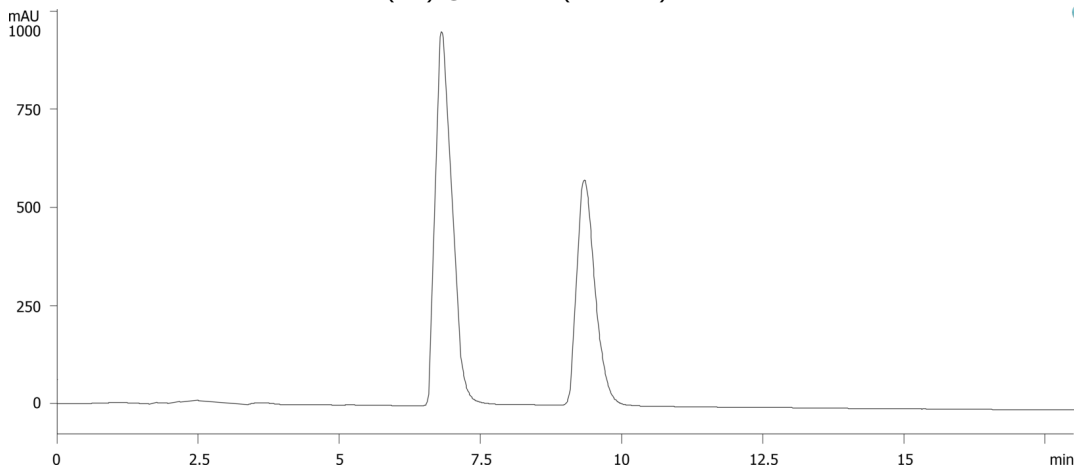
Eluent C: Methanol 0.3%DEA

Gradient Profile:	Step No.	Time (min)	Pct A	Pct B	Pct C
	1	0	75	10	15

Flow Rate: 1 mL/min

Col. Temp.: ambient

Detection: UV-Vis Abs.-Variable Wave.(UV) @ 225 nm (ambient)



Products used in this application:



ANALYTES:

1 R isomer

Retention Time: 6.813 min

2 S Isomer

Retention Time: 9.369 min

