

Tumeric pill Analysis on Kinetex 2.6u Biphenyl 150x4.6mm

Column: Kinetex® 2.6 µm Biphenyl 100 Å, LC Column 150 x 4.6 mm, Ea

Dimensions: 150 x 4.6 mm ID

Order No: 00F-4622-E0

Elution Type: Gradient

Eluent A: 0.1% Formic Acid in Water

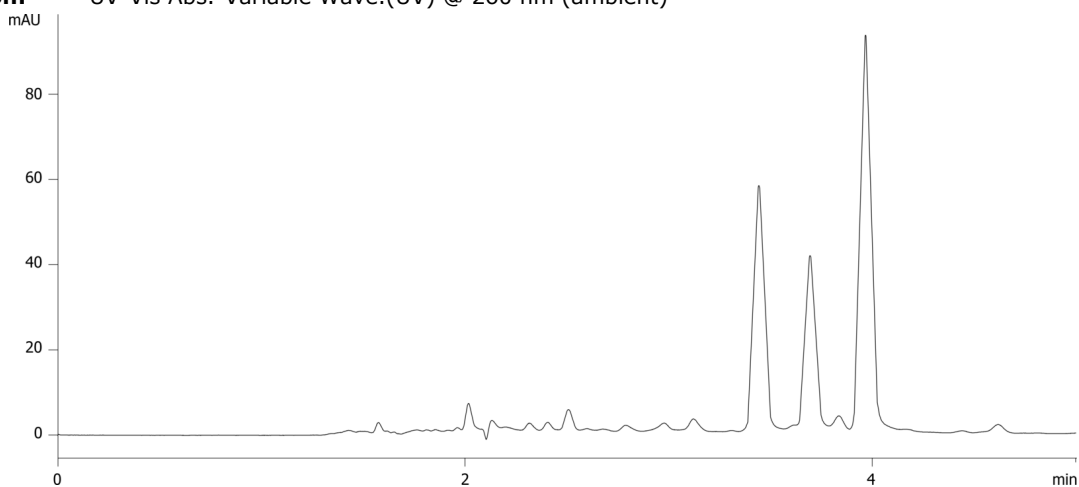
Eluent B: Acetonitrile

| Gradient Profile: | Step No. | Time (min) | Pct A | Pct B |
|-------------------|----------|------------|-------|-------|
| | 1 | 0 | 45 | 55 |
| | 2 | 8 | 30 | 70 |
| | 3 | 9 | 0 | 100 |
| | 4 | 10 | 0 | 100 |
| | 5 | 10.1 | 45 | 55 |
| | 6 | 13 | 45 | 55 |

Flow Rate: 1 mL/min

Col. Temp.: ambient

Detection: UV-Vis Abs.-Variable Wave.(UV) @ 260 nm (ambient)



Products used in this application:



ANALYTES:

- 1 Bis-demethoxycurcumin
- 2 Demethoxycurcumin
- 3 Curcumin