

# HPLC Application

ID No.: 23486

## Steroid 8 Mix on Luna Omega 1.6u C18 50x2.1mm

**Column:** Luna Omega 1.6  $\mu$ m C18 100 Å, LC Column 50 x 2.1 mm, Ea

**Dimensions:** 50 x 2.1 mm ID

**Order No:** 00B-4742-AN

**Elution Type:** Gradient

**Eluent A:** Water

**Eluent B:** Acetonitrile

| Gradient Profile: | Step No. | Time (min) | Pct A | Pct B |
|-------------------|----------|------------|-------|-------|
|                   | 1        | 0          | 80    | 20    |
|                   | 2        | 6          | 40    | 60    |
|                   | 3        | 6.01       | 80    | 20    |
|                   | 4        | 8          | 80    | 20    |

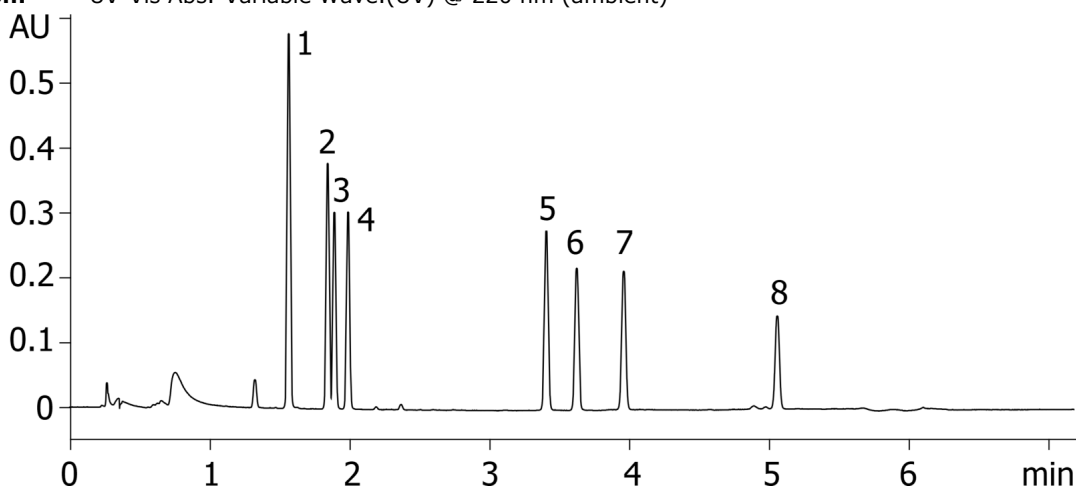
**Flow Rate:** 0.4 mL/min

**Col. Temp.:** ambient

**Detection:** UV-Vis Abs.-Variable Wave.(UV) @ 220 nm (ambient)



Products used in this application:



### ANALYTES:

- 1 Estriol
- 2 Prednisolone
- 3 Hydrocortisone
- 4 Cortisone
- 5 Cortisone Acetate
- 6 21-Hydroxycortisone
- 7 17-Hydroxycortisone
- 8 Deoxycorticosterone

