

Hormones Extracted from Sediment using QuEChERS by LCMSMS

Column: Kinetex® 2.6 µm XB-C18 100 Å, LC Column 50 x 2.1 mm, Ea

Dimensions: 50 x 2.1 mm ID

Order No: 00B-4496-AN

Elution Type: Gradient

Eluent A: DI Water

Eluent B: Acetonitrile

Gradient Profile:	Step No.	Time (min)	Pct A	Pct B
	1	0	85	15
	2	1	80	20
	3	7.25	40	60
	4	8	20	80
	5	9.5	20	80
	6	9.55	85	15
	7	14	85	15

Flow Rate: 500 µL/min

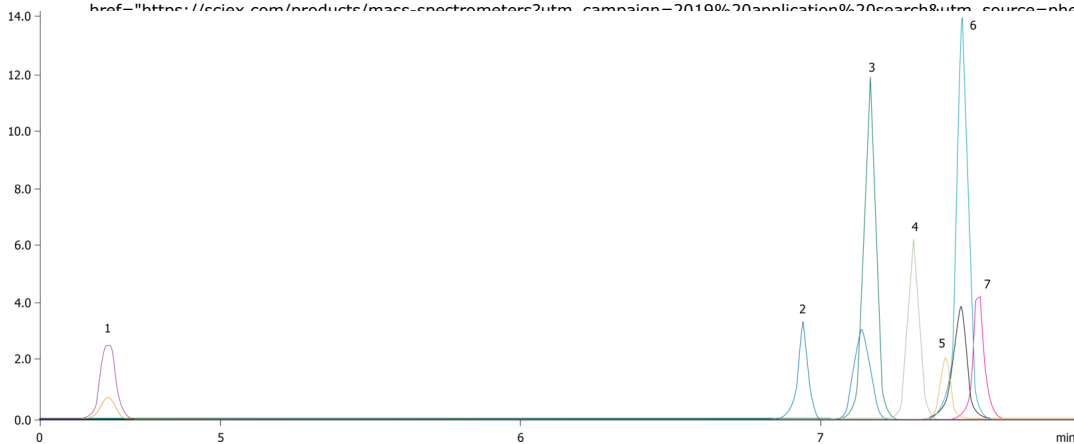
Col. Temp.: ambient

Detection: Tandem Mass Spec (MS-MS) @ (ambient)

Detector Info:

<a target="_blank"

href="https://sciex.com/products/mass-spectrometers?utm_campaign=2019%20application%20search&utm_source=phenomenex&utm_medium=referral">SCIEX<



ANALYTES:

- 1 Estriol
- 2 17 β -Estradiol
- 3 Testosterone
- 4 Equilin
- 5 17 α -Ethinylestradiol
- 6 Estrone
- 7 Androstenedione



Products used in this application:

