

HPLC Application

ID No.: 23583

Cannabinoids on Kinetex 1.7u F5 100x2.1mm

Column: Kinetex® F5 1.7µm 100 Å, LC Column 100 x 2.1 mm, Ea

Dimensions: 100 x 2.1 mm ID

Order No: 00D-4722-AN

Elution Type: Gradient

Eluent A: 20mM Ammonium Formate pH 3.2

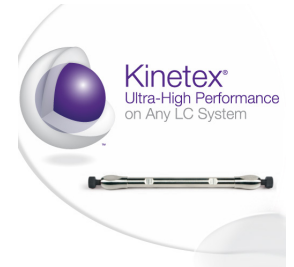
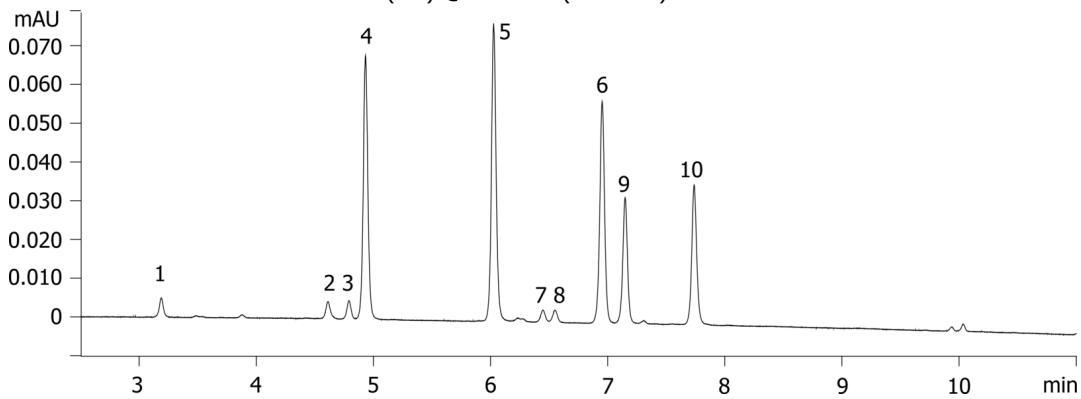
Eluent B: Acetonitrile

Gradient Profile:	Step No.	Time (min)	Pct A	Pct B
	1	0	40	60
	2	12	5	95
	3	13	5	95
	4	13.01	40	60
	5	15	40	60

Flow Rate: 0.4 mL/min

Col. Temp.: 40 °C

Detection: UV-Vis Abs.-Variable Wave.(UV) @ 256 nm (ambient)



Products used in this application:



Cannabinoids on Kinetex 1.7u F5 100x2.1mm

ANALYTES:

- 1 CBVD
- 2 Cannabidiol
- 3 CBG
- 4 Cannabidiolic Acid
- 5 CBG-A
- 6 Cannabinol
- 7 Delta 9 THC
- 8 Delta 8 THC
- 9 CBC
- 10 THCA-A

