

# HPLC Application

ID No.: 23673

## Cannabinoids by SFC using Lux 5 $\mu$ Cellulose-2 250x4.6

**Column:** Lux<sup>®</sup> 5  $\mu$ m Cellulose-2, LC Column 250 x 4.6 mm, Ea

**Dimensions:** 250 x 4.6 mm ID

**Order No:** 00G-4457-E0

**Elution Type:** Gradient

**Eluent A:** Carbon Dioxide

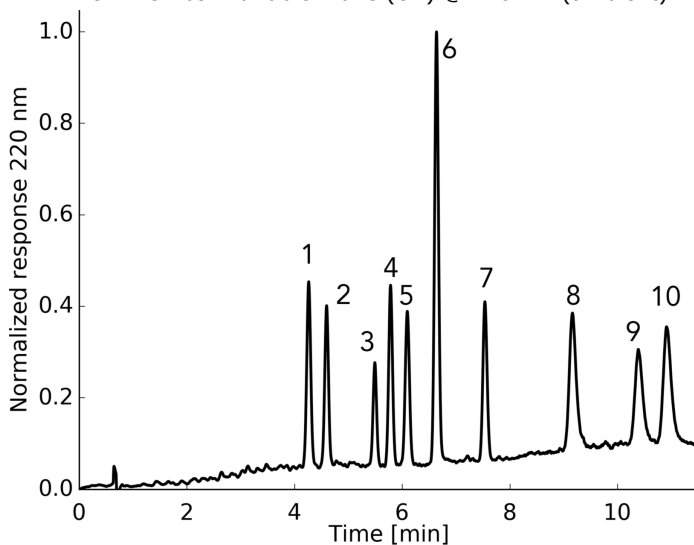
**Eluent B:** Ethanol

Gradient Profile:	Step No.	Time (min)	Pct A	Pct B
	1	0	98.5	1.5
	2	2.8	96	4
	3	9.7	83	17
	4	10.6	83	17
	5	10.9	98.5	1.5
	6	11.5	98.5	1.5

**Flow Rate:** 6 mL/min

**Col. Temp.:** 25 °C

**Detection:** UV-Vis Abs.-Variable Wave.(UV) @ 220 nm (ambient)



Products used in this application:



## Cannabinoids by SFC using Lux 5 $\mu$ Cellulose-2 250x4.6

### ANALYTES:

- 1 Cannabidivarin (CBDV)
- 2 Cannabidiol (CBD)
- 3 Cannabichromene (CBC)
- 4 Tetrahydrocannabivarin (THCV)
- 5 Tetrahydrocannabinol (THC)
- 6 Cannabinol (CBN)
- 7 Cannabigerol (CBG)
- 8 Cannabidiolic Acid (CBDA)
- 9 Tetrahydrocannabinolic Acid (THCA)TetrahydrocannabinolicTetrahydrocannabinolic
- 10 Cannabigerolic Acid (CBGA)

