

HPLC Application

ID No.: 23692

Insulin by LCMS using Luna Omega 1.6u PS C18 50x2.1mm

Column: Luna Omega 1.6u PS C18 100A, LC Column 50 x 2.1 mm, Ea

Dimensions: 50 x 2.1 mm ID

Order No: 00B-4752-AN

Elution Type: Gradient

Eluent A: Water with 0.1% formic acid

Eluent B: Acetonitrile with 0.1% formic acid

Gradient Profile:	Step No.	Time (min)	Pct A	Pct B
	1	0	97	3
	2	3	20	80
	3	3.1	97	3
	4	5	97	3

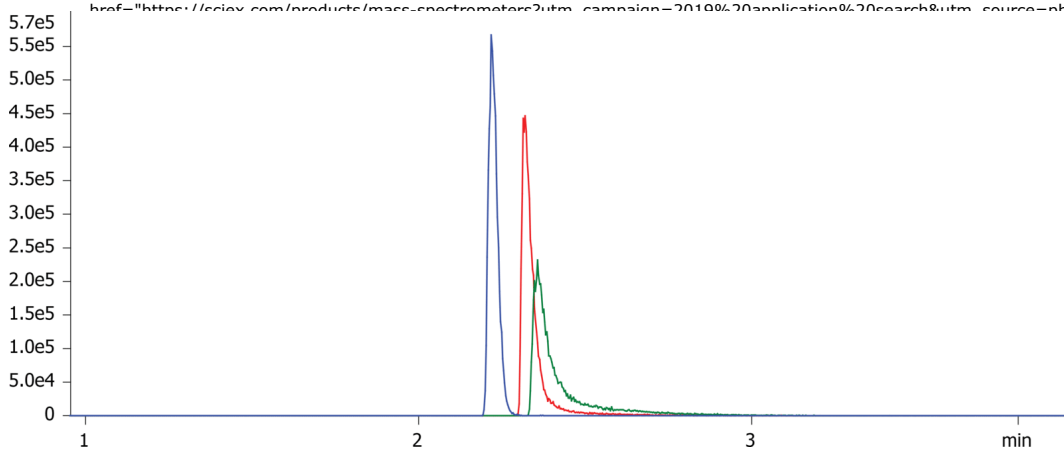
Flow Rate: 0.5 mL/min

Col. Temp.: ambient

Detection: Tandem Mass Spec (MS-MS) @ (ambient)

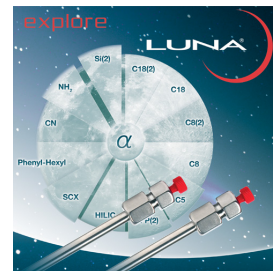
Detector Info:

SCIEX



ANALYTES:

1 Insulin



Products used in this application:

