

HPLC Application

ID No.: 23701

Peptides by LCMS using Luna Omega 1.6u PS C18 50x2.1mm

Column: Luna Omega 1.6u PS C18 100A, LC Column 50 x 2.1 mm, Ea

Dimensions: 50 x 2.1 mm ID

Order No: 00B-4752-AN

Elution Type: Gradient

Eluent A: Water with 0.1% formic acid

Eluent B: Acetonitrile with 0.1% formic acid

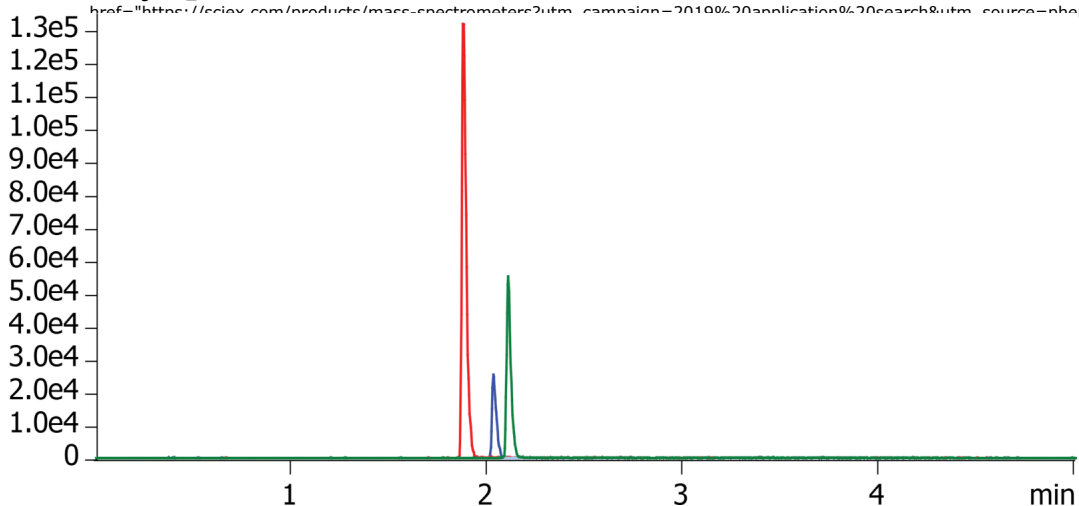
Gradient Profile:	Step No.	Time (min)	Pct A	Pct B
	1	0	97	3
	2	3	5	95
	3	3.1	97	3
	4	5	97	3

Flow Rate: 0.4 mL/min

Col. Temp.: ambient

Detection: Tandem Mass Spec (MS-MS) @ (ambient)

Detector Info: SCIEX<



ANALYTES:

- 1 Angiotensin II
- 2 Met-Enkephalin
- 3 Leu-Enkephalin



Products used in this application:

