

HPLC Application

ID No.: 23843

Mitragynine (Kratom) & 7-OH Mitragynine on Luna Omega 1.6 µm PS C18, 50 x 2.1 mm

Column: Luna Omega 1.6u PS C18 100A, LC Column 50 x 2.1 mm, Ea

Dimensions: 50 x 2.1 mm ID

Order No: 00B-4752-AN

Elution Type: Gradient

Eluent A: 0.1% Formic Acid in Water

Eluent B: 0.1% Formic Acid in Acetonitrile

Gradient Profile:	Step No.	Time (min)	Pct A	Pct B
	1	0	90	10
	2	4	50	50
	3	4.01	10	90
	4	4.5	10	90
	5	4.51	90	10
	6	7	90	10

Flow Rate: 0.4 mL/min

Col. Temp.: ambient

Detection: Tandem Mass Spec (MS-MS) @ (650 °C)

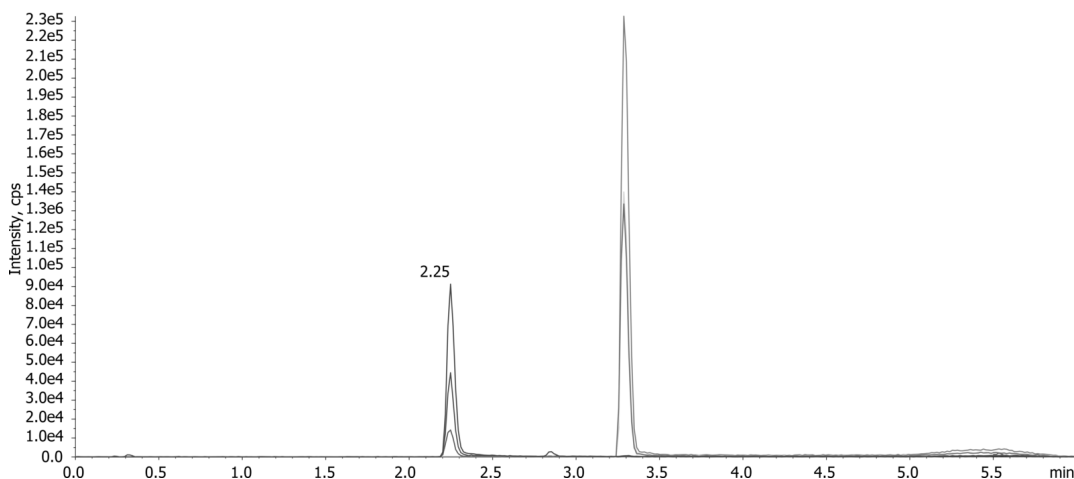
Detector Info:

23843

SCIEX



Products used in this application:



ANALYTES:

- 1 7-OH Mitragynine
Retention Time: 2.25 min
- 2 Mitragynine
Retention Time: 3.29 min

