

Chiral Separation of 2-Chloromandelic Acid on Lux 5µm i-Cellulose-5

Column: Lux® 5 µm i-Cellulose-5, LC Column 250 x 4.6 mm, Ea

Dimensions: 250 x 4.6 mm ID

Order No: 00G-4756-E0

Elution Type: Isocratic

Eluent A: 0.1% TFA in Dichloromethane

Eluent B: 0.1% TFA in IPA

Gradient Profile:	Step No.	Time (min)	Pct A	Pct B
	1	0	99	1

Flow Rate: 1 mL/min

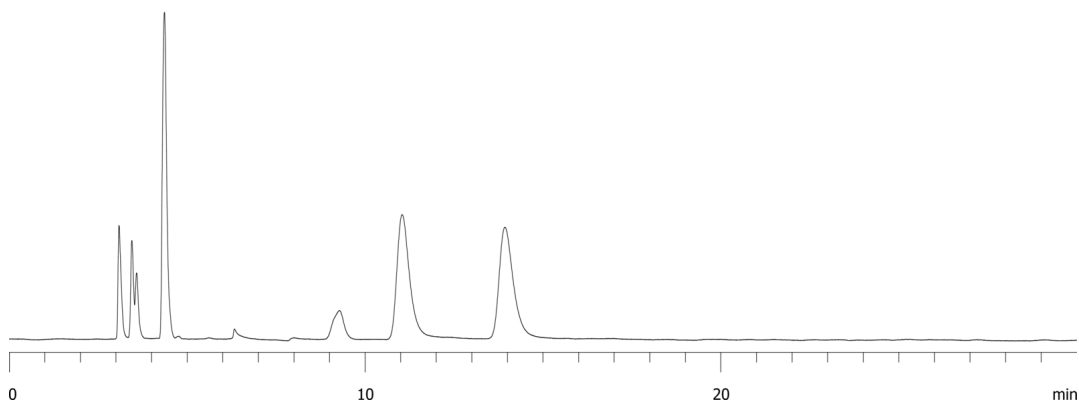
Col. Temp.: ambient

Detection: UV-Vis Abs.-Variable Wave.(UV) @ 270 nm (ambient)

23879



Products used in this application:



ANALYTES:

1 2-Chloromandelic acid

Retention Time: 11 min

2 2-Chloromandelic acid

Retention Time: 13.9 min

