

HPLC Application

ID No.: 23884

Chiral Separation of 2-Bromo-1-Indanone on Lux 3 μ m i-Cellulose-5

Column: Lux[®] 3 μ m i-Cellulose-5, LC Column 250 x 4.6 mm, Ea

Dimensions: 250 x 4.6 mm ID

Order No: 00G-4755-E0

Elution Type: Isocratic

Eluent A: Hexane

Eluent B: THF

Gradient Profile:	Step No.	Time (min)	Pct A	Pct B
	1	0	85	15

Flow Rate: 1 mL/min

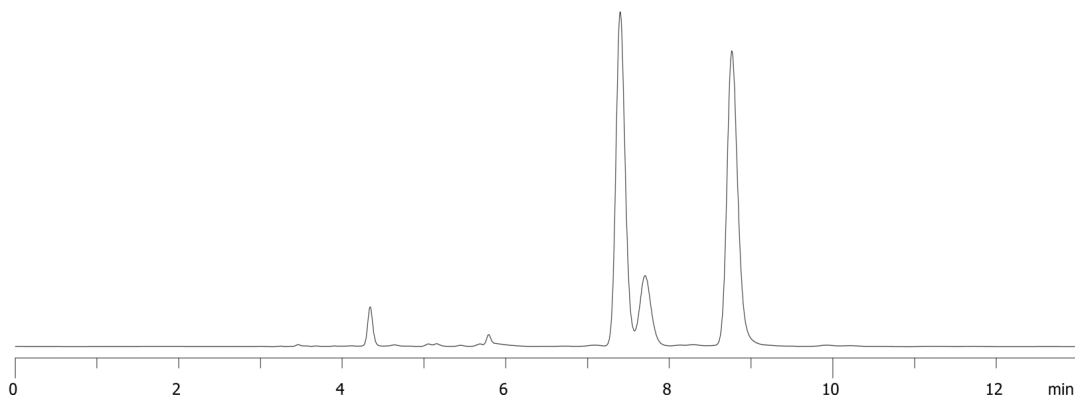
Col. Temp.: ambient

Detection: UV-Vis Abs.-Variable Wave.(UV) @ 254 nm (ambient)

23884



Products used in this application:



ANALYTES:

1 2-Bromo-1-Indanone

Retention Time: 7.398 min

2 2-Bromo-1-Indanone

Retention Time: 8.764 min

