

HPLC Application

ID No.: 23911

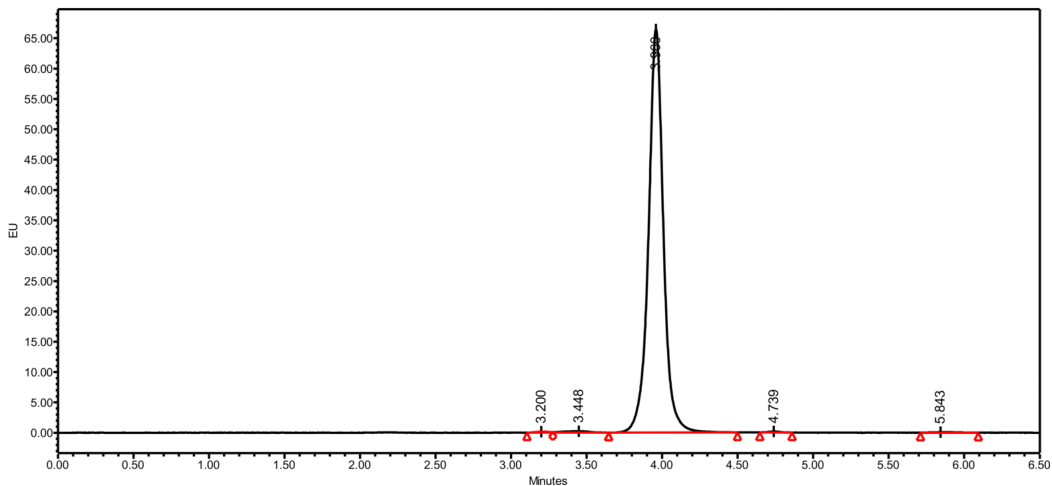
Rituximab on Yarra SEC-X300

Column: N/A
Dimensions: N/A
Order No: N/A
Elution Type: N/A
Eluent A: 50 mM Potassium Phosphate, 250 KCl, pH 6.8
Gradient

Step No.	Time (min)	Pct A
1	0	100

Profile:
Flow Rate: 0.35 mL/min
Col. Temp.: 25 °C
Detection: Fluorescence (FLUOR) @ 280 nm (25 °C)

23911



ANALYTES:

1 Rituxumab

