

HPLC Application

ID No.: 24173

Cromolyn sodium using Luna Omega 3um Polar C18 50x4.6mm

Column: Luna® Omega 3 µm Polar C18 100 Å, LC Column 50 x 4.6 mm, Ea

Dimensions: 50 x 4.6 mm ID

Order No: 00B-4760-E0

Elution Type: Gradient

Eluent A: 10mM ammonium formate pH 3.3

Eluent B: Acetonitrile with 0.1% formic acid

| Gradient Profile: | Step No. | Time (min) | Pct A | Pct B |
|--------------------------|-----------------|-------------------|--------------|--------------|
| | 1 | 0 | 90 | 10 |
| | 2 | 5 | 10 | 90 |

Flow Rate: 1.5 mL/min

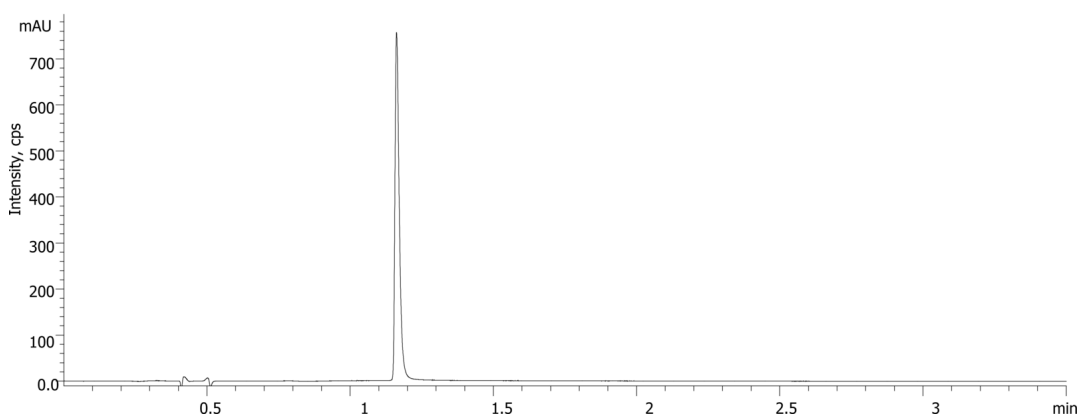
Col. Temp.: 40 °C

Detection: UV-Vis Abs.-Variable Wave.(UV) @ 254 nm (ambient)

24173



Products used in this application:



ANALYTES:

- 1 Cromolyn sodium (1mg/ml)

