

# HPLC Application

ID No.: 24194

## Chromatographic Separation of Isomeric GCDCA and GDCA on Kinetex 2.6µm Polar C18 100x2.1 Column

**Column:** Kinetex® 2.6 µm Polar C18 100 Å, LC Column 100 x 2.1 mm, Ea

**Dimensions:** 100 x 2.1 mm ID

**Order No:** 00D-4759-AN

**Elution Type:** Gradient

**Eluent A:** 2mM Ammonium acetate (pH 6.9)

**Eluent B:** Methanol/Acetonitrile (50-50)

Gradient Profile:	Step No.	Time (min)	Pct A	Pct B
	1	0	55	45
	2	9	30	70
	3	9.5	30	70
	4	9.51	55	45
	5	12	55	45

**Flow Rate:** 400 mL/min

**Col. Temp.:** 50 °C

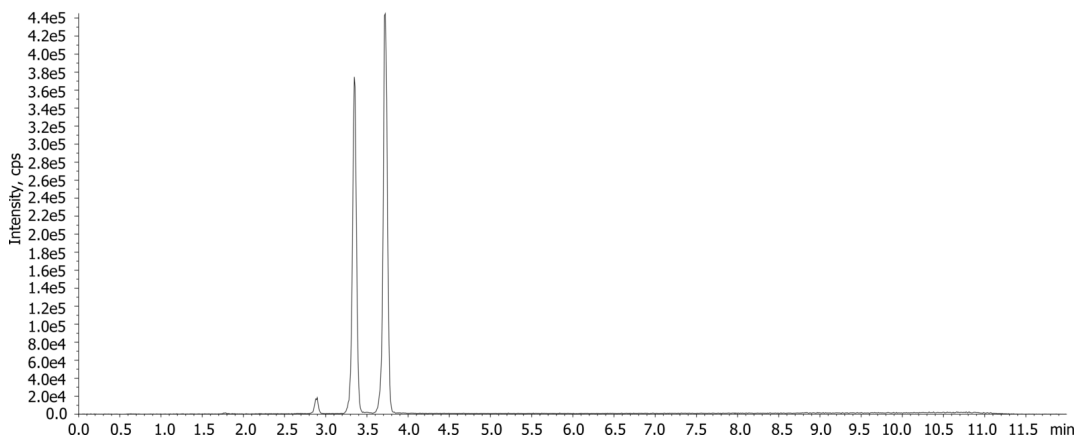
**Detection:** Mass Spectrometer (MS) @ amu (50 °C)

**Detector Info:** <a target="\_blank" href="https://sciex.com/products/mass-spectrometers?utm\_campaign=2019%20application%20search&utm\_source=phenomenex&utm\_medium=referral">SCIEX<

24194



Products used in this application:



### ANALYTES:

1 GCDCA

Retention Time: 3.35 min

2 GDCA

Retention Time: 3.7 min

