

HPLC Application

ID No.: 24217

12 Cannabinoids in AcCN using Kinetex 2.6µm Polar C18 150x4.6mm

Column: Kinetex[®] 2.6 µm Polar C18 100 Å, LC Column 150 x 4.6 mm, Ea

Dimensions: 150 x 4.6 mm ID

Order No: 00F-4759-E0

Elution Type: Gradient

Eluent A: Water with 0.1% phosphoric acid

Eluent B: Acetonitrile with 0.1% phosphoric acid

Gradient Profile:	Step No.	Time (min)	Pct A	Pct B
	1	0	25	75
	2	6	0	100

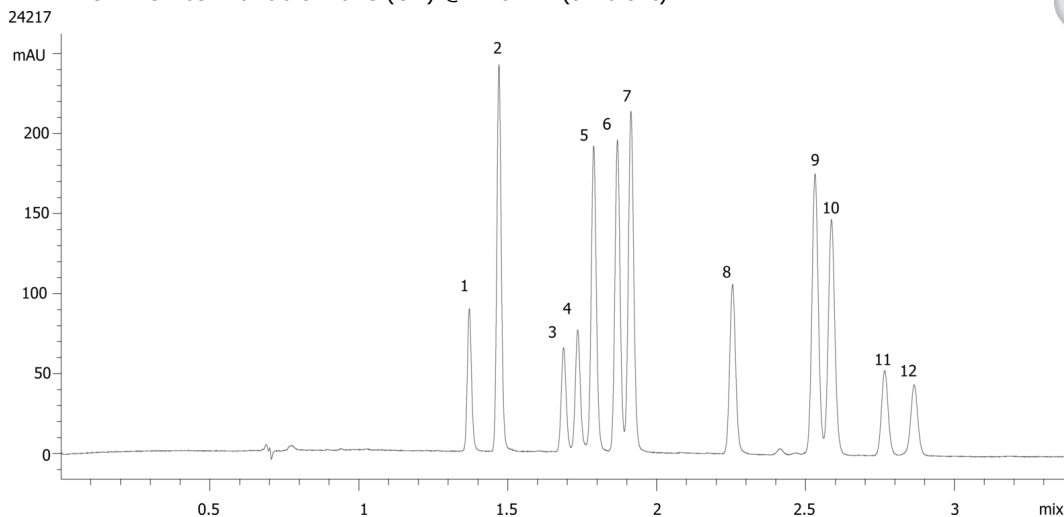
Flow Rate: 1.8 mL/min

Col. Temp.: 50 °C

Detection: UV-Vis Abs.-Variable Wave.(UV) @ 210 nm (ambient)



Products used in this application:



12 Cannabinoids in AcCN using Kinetex 2.6um Polar C18 150x4.6mm

ANALYTES:

- 1 CBDV-A
- 2 CBDV
- 3 CBD-A
- 4 CBG-A
- 5 CBG
- 6 CBD
- 7 THC-V
- 8 CBN
- 9 Delta-9-THC
- 10 Delta-8-THC
- 11 CBC
- 12 THC-A

