

# HPLC Application

ID No.: 24256

## 12 Cannabinoid Separation on Luna Omega Polar C18 3u Bio -Relevant Proportions 1uL inj Volume

**Column:** Luna® Omega 3 µm Polar C18 100 Å, LC Column 150 x 4.6 mm, Ea

**Dimensions:** 150 x 4.6 mm ID

**Order No:** 00F-4760-E0

**Elution Type:** Isocratic

**Eluent A:** Water + 0.1% Formic Acid

**Eluent B:** Acetonitrile + 0.1% Formic Acid

Gradient Profile:	Step No.	Time (min)	Pct A	Pct B
	1	0	100	0

**Flow Rate:** 1 mL/min

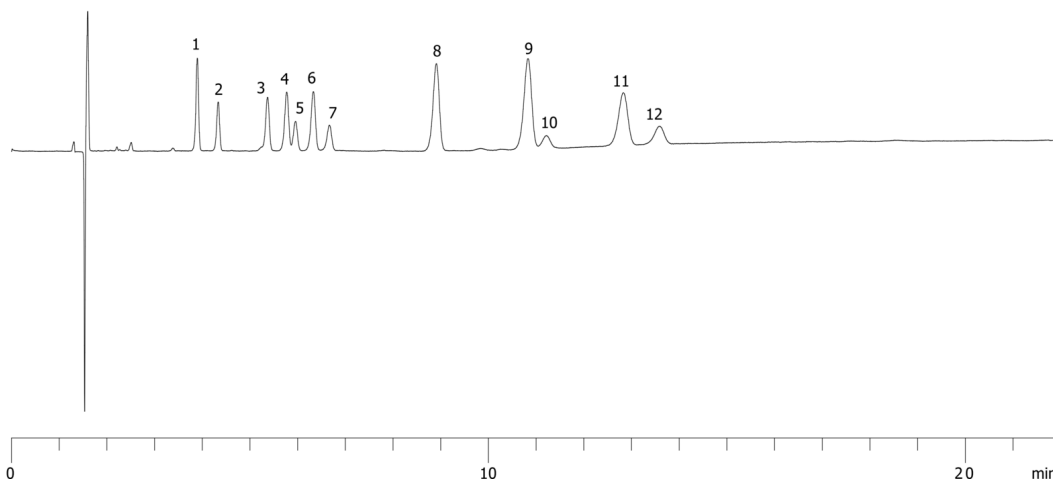
**Col. Temp.:** ambient

**Detection:** UV-Vis Abs.-Variable Wave.(UV) @ 230 nm (ambient)

24256



Products used in this application:



## 12 Cannabinoid Separation on Luna Omega Polar C18 3u Bio -Relevant Proportions 1uL inj Volume

### ANALYTES:

- 1 Cannabidiol
- 2 Cannabidiolic Acid (CBDA)
- 3 Cannabinol (CBN)
- 4 Delta-9-Tetrahydrocannabinol (THC)
- 5 Delta-9-Tetrahydrocannabinolic Acid (THCA-A)
- 6 Cannbichromene (CBC)
- 7 Cannabigerol (CBG)
- 8 Delta-8-Tetrahydrocannabinol (THC)
- 9 Cannabidivarinic Acid (CBDVA)
- 10 Cannabigerolic Acid (CBGA)
- 11 Cannabidivarin (CBDV)
- 12 Tetrahydrocannabivarin (THCV)

