

HPLC Application

ID No.: 24259

Iohexol in Serum - Kinetex 2.6µm Polar C18 and Phree

Column: Kinetex® 2.6 µm Polar C18 100 Å, LC Column 50 x 2.1 mm, Ea

Dimensions: 50 x 2.1 mm ID

Order No: 00B-4759-AN

Elution Type: Gradient

Eluent A: 10 mM Ammonium Acetate (unadjusted pH)

Eluent B: 10 mM Ammonium Acetate in MeOH

Gradient Profile:	Step No.	Time (min)	Pct A	Pct B
	1	0.01	100	0
	2	0.3	100	0
	3	2.5	35	65
	4	3	35	65
	5	3.1	5	95
	6	4.1	5	95
	7	4.5	100	0
	8	7	100	0

Flow Rate: 300 µL/min

Col. Temp.: 40 °C

Detection: Tandem Mass Spec (MS-MS) @ (600 °C)

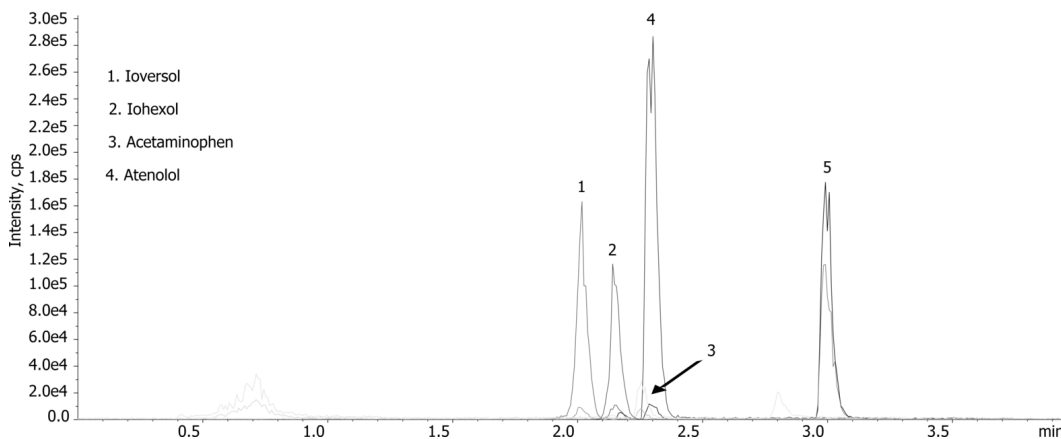
Detector Info:

24259

SCIEX



Products used in this application:



ANALYTES:

- 1 Ioversol**
Retention Time: 2.01 min
- 2 Iohexol**
Retention Time: 2.14 min
- 3 Acetaminophen**
Retention Time: 2.24 min
- 4 Atenolol**
Retention Time: 2.29 min
- 5 Metoprolol**
Retention Time: 2.98 min

