

Chiral Separation of Tramadol on Lux 5 μ m i-Amylose-1 in NP

Column: Lux[®] 5 μ m i-Amylose-1, LC Column 250 x 4.6 mm, Ea

Dimensions: 250 x 4.6 mm ID

Order No: 00G-4762-E0

Elution Type: Isocratic

Eluent A: 0.1% DEA in Hexane

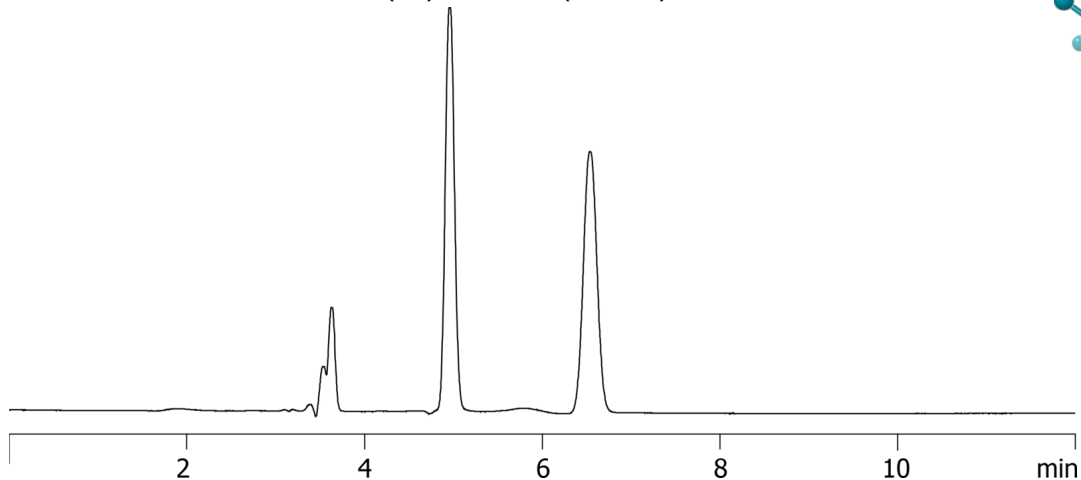
Eluent B: 0.1% DEA in IPA

Gradient Profile:	Step No.	Time (min)	Pct A	Pct B
	1	0	90	10

Flow Rate: 1 mL/min

Col. Temp.: ambient

Detection: UV-Vis Abs.-Variable Wave.(UV) @ 270 nm (ambient)



ANALYTES:

- 1 Tramadol
Retention Time: 4.958 min
- 2 Tramadol
Retention Time: 6.537 min



Products used in this application:

