

## Chiral Separation of 2-Bromo-1-Indanone on Lux 5µm i-Amylose-1 in Dichloromethane

**Column:** Lux® 5 µm i-Amylose-1, LC Column 250 x 4.6 mm, Ea

**Dimensions:** 250 x 4.6 mm ID

**Order No:** 00G-4762-E0

**Elution Type:** Isocratic

**Eluent A:** 0.1% TFA in Hexane

**Eluent B:** 0.1% TFA in Dichloromethane

| Gradient Profile: | Step No. | Time (min) | Pct A | Pct B |
|-------------------|----------|------------|-------|-------|
|                   | 1        | 0          | 65    | 35    |

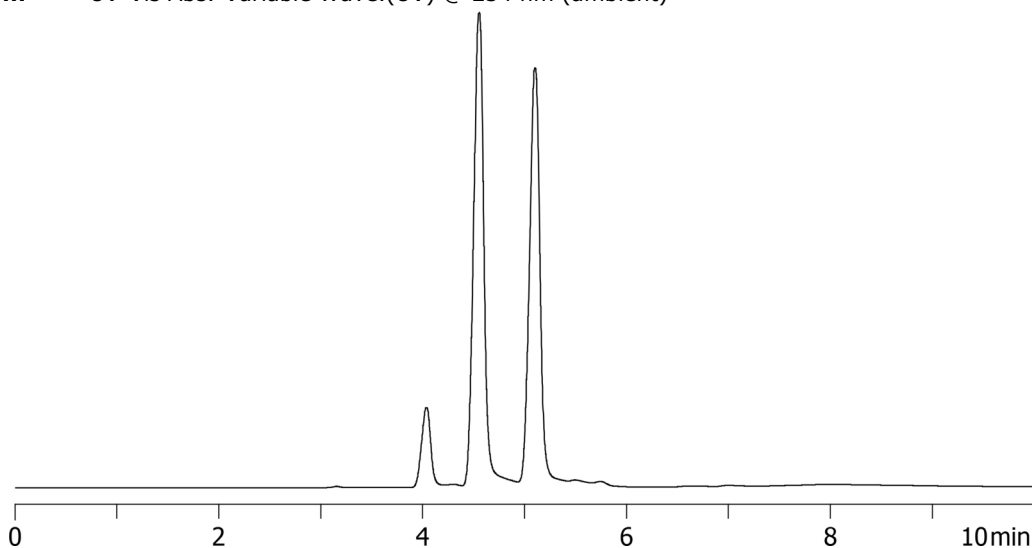
**Flow Rate:** 1 mL/min

**Col. Temp.:** ambient

**Detection:** UV-Vis Abs.-Variable Wave.(UV) @ 254 nm (ambient)



Products used in this application:



### ANALYTES:

**1** 2-Bromo-1-Indanone

Retention Time: 4.552 min

**2** 2-Bromo-1-Indanone

Retention Time: 5.102 min

