

## MeOH-2 Guar Gum Extraction Chromatography on Luna Omega 3u Polar C18

**Column:** Luna® Omega 3 µm Polar C18 100 Å, LC Column 150 x 4.6 mm, Ea

**Dimensions:** 150 x 4.6 mm ID

**Order No:** 00F-4760-E0

**Elution Type:** Gradient

**Eluent A:** 20 mM Sodium Phosphate (pH 3.5 with H3PO4)

**Eluent B:** Methanol

Gradient Profile:	Step No.	Time (min)	Pct A	Pct B
	1	0	100	0
	2	15	40	60

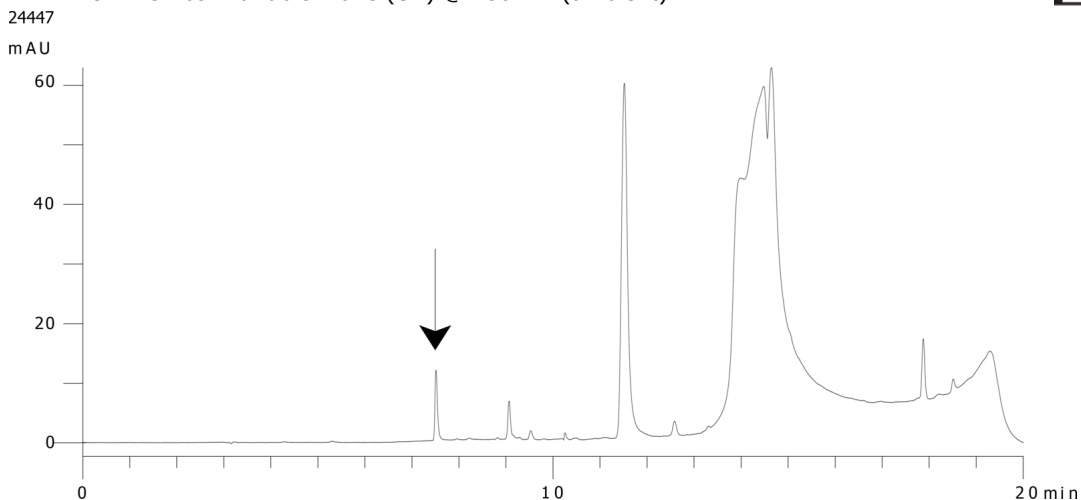
**Flow Rate:** 0.5 mL/min

**Col. Temp.:** ambient

**Detection:** UV-Vis Abs.-Variable Wave.(UV) @ 280 nm (ambient)



Products used in this application:



### ANALYTES:

- 1 Thiamine

