

Fipronil and other Contaminants from

Column: Kinetex® 2.6 µm Polar C18 100 Å, LC Column 100 x 2.1 mm, Ea

Dimensions: 100 x 2.1 mm ID

Order No: 00D-4759-AN

Elution Type: Gradient

Eluent A: 5mM Ammonium Formate in Water

Eluent B: mM Ammonium Formate in methanol + 0.05% Formic Acid

Gradient Profile:	Step No.	Time (min)	Pct A	Pct B
	1	0	95	5
	2	0.5	95	5
	3	1.5	60	40
	4	3	20	80
	5	5	13	87
	6	5.5	5	95
	7	5.6	95	5
	8	7	95	5

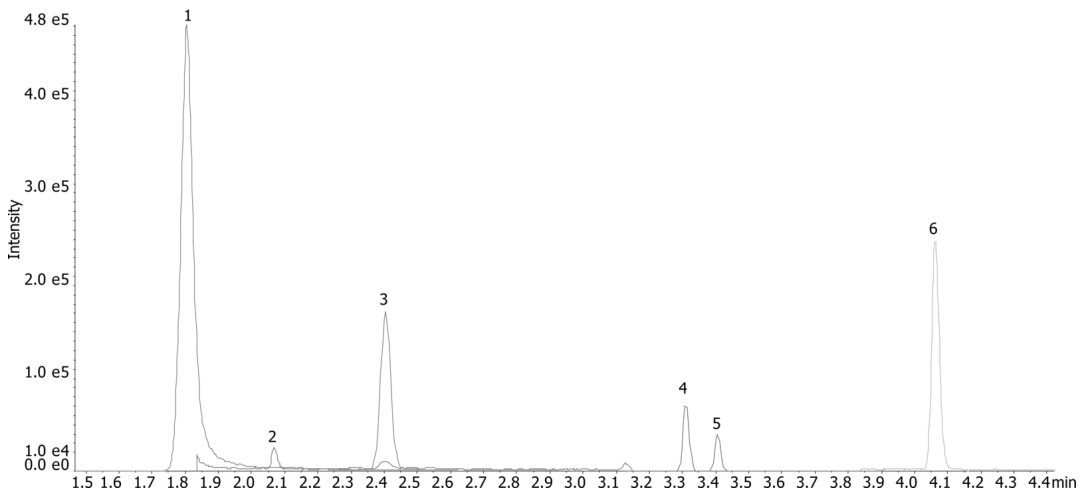
Flow Rate: 0.9 mL/min

Col. Temp.: ambient

Detection: Mass Spectrometer (MS) @ amu (ambient)

Detector Info:

24563



ANALYTES:

- 1** DPMF
Retention Time: 1.8 min
- 2** DMA
Retention Time: 2.08 min
- 3** DMF
Retention Time: 2.39 min
- 4** Fipronil
Retention Time: 3.3 min
- 5** Fipronil Sulfate
Retention Time: 3.39 min
- 6** Amitraz
Retention Time: 4.05 min



Products used in this application:

