

# HPLC Application

ID No.: 25279

## 16 Cannabinoids on Kinetex C18

**Column:** Kinetex<sup>®</sup> 2.6  $\mu$ m C18 100 Å, LC Column 150 x 4.6 mm, Ea

**Dimensions:** 150 x 4.6 mm ID

**Order No:** 00F-4462-E0

**Elution Type:** Gradient

**Eluent A:** 0.1% formic acid in water

**Eluent B:** 0.1% formic acid in 75:25 Methanol:Acetonitrile

| <b>Gradient Profile:</b> | <b>Step No.</b> | <b>Time (min)</b> | <b>Pct A</b> | <b>Pct B</b> |
|--------------------------|-----------------|-------------------|--------------|--------------|
|                          | <b>1</b>        | 0                 | 20           | 80           |
|                          | <b>2</b>        | 8                 | 20           | 80           |
|                          | <b>3</b>        | 10                | 0            | 100          |
|                          | <b>4</b>        | 12                | 0            | 100          |

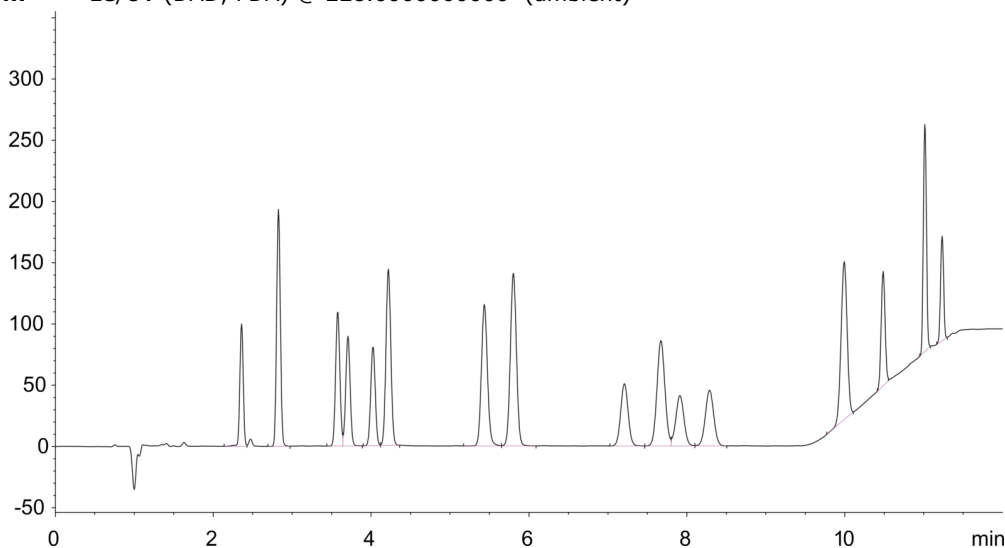
**Flow Rate:** 1.5 mL/min

**Col. Temp.:** 30 °C

**Detection:** LC/UV (DAD, PDA) @ 228.000000000 (ambient)



Products used in this application:



## 16 Cannabinoids on Kinetex C18

### ANALYTES:

- 1 CBDV
- 2 CBDVA
- 3 CBD
- 4 CBG
- 5 THCV
- 6 CBDA
- 7 CBGA
- 8 CBN
- 9 D9-THC
- 10 THCVA
- 11 D8-THC
- 12 CBL
- 13 CBC
- 14 CBNA
- 15 THCA-A
- 16 CBCA

