

# HPLC Application

ID No.: 25472

## Aloe Emodin, Eugenol Methyl Ether, and Aloins (A and B) from Aloe Standards Screen on Kinetex 2.6u PS C18 50

**Column:** Kinetex<sup>®</sup> 2.6 μm PS C18 100 Å, LC Column 50 x 4.6 mm, Ea

**Dimensions:** 50 x 4.6 mm ID

**Order No:** 00B-4780-E0

**Elution Type:** Gradient

**Eluent A:** 0.1% Formic Acid in Water

**Eluent B:** 0.1% Formic Acid in MeOH

Gradient Profile:	Step No.	Time (min)	Pct A	Pct B
	1	0	75	25
	2	0.5	75	25
	3	5	20	80
	4	7	20	80
	5	7.1	75	25
	6	9	75	25

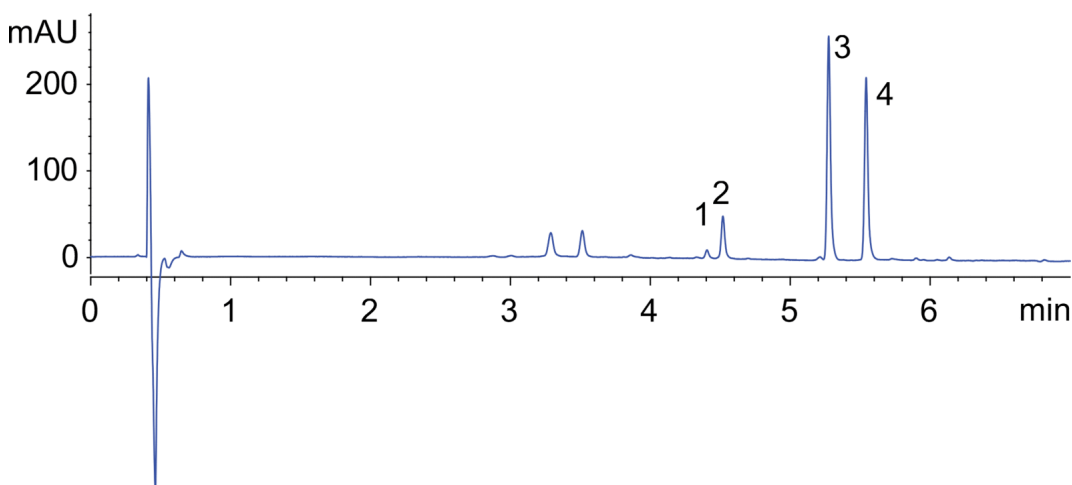
**Flow Rate:** 1.2 mL/min

**Col. Temp.:** 30 °C

**Detection:** LC/UV (DAD, PDA) @ 220.000000000 nm (nanometers) (30 °C)  
25472



Products used in this application:



### ANALYTES:

- 1** Aloin A  
Retention Time: 4.405 min
- 2** Aloin B  
Retention Time: 4.519 min
- 3** Methyl Eugenol  
Retention Time: 5.275 min
- 4** Aloe Emodin  
Retention Time: 5.543 min

