

## Bile Acids by LCMS; Kinetex 2.6u PS C18 100x2.1mm (Taurochenodeoxycholic acid and Taurohyodeoxycholic acid)

**Column:** Kinetex® 2.6 µm PS C18 100 Å, LC Column 100 x 2.1 mm, Ea

**Dimensions:** 100 x 2.1 mm ID

**Order No:** 00D-4780-AN

**Elution Type:** Gradient

**Eluent A:** 10mM Ammonium Acetate in Water

**Eluent B:** Acetonitrile

Gradient Profile:	Step No.	Time (min)	Pct A	Pct B
	1	0	80	20
	2	6	60	40
	3	6.1	80	20
	4	9	80	20

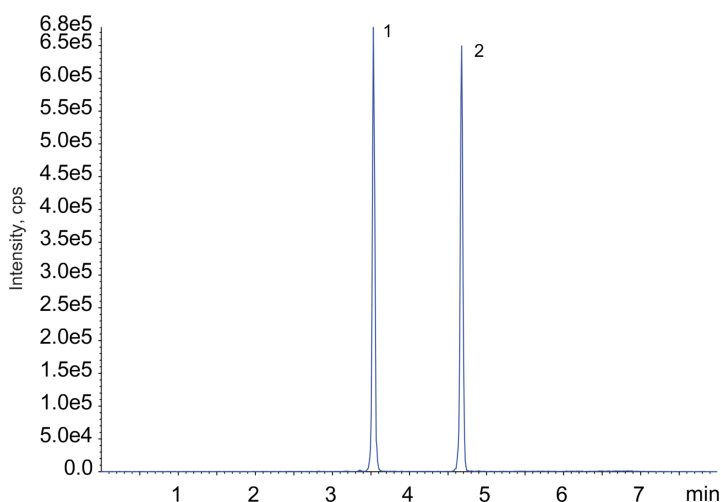
**Flow Rate:** 500 µL/min

**Col. Temp.:** 30 °C

**Detection:** LC/MS @ (30 °C)  
25496



Products used in this application:



## Bile Acids by LCMS; Kinetex 2.6u PS C18 100x2.1mm (Taurochenodeoxycholic acid and Taurohyodeoxycholic acid)

### ANALYTES:

- 1 taurohyodeoxycholic
- 2 taruenchenodeoxycholic
- 3
- 4
- 5
- 6
- 7
- 8
- 9
- 10

