

## LC-MS/MS Chromatogram for Amlodipine Enantiomers and Internal Standards

**Column:** Lux® 3 µm Cellulose-4, LC Column 150 x 2 mm, Ea  
**Dimensions:** 150 x 2 mm ID  
**Order No:** 00F-4490-B0  
**Elution Type:** Gradient  
**Eluent A:** 0.05% Ethanolamine in Acetonitrile and Isopropyl Alcohol (96:4 v/v)  
**Gradient**

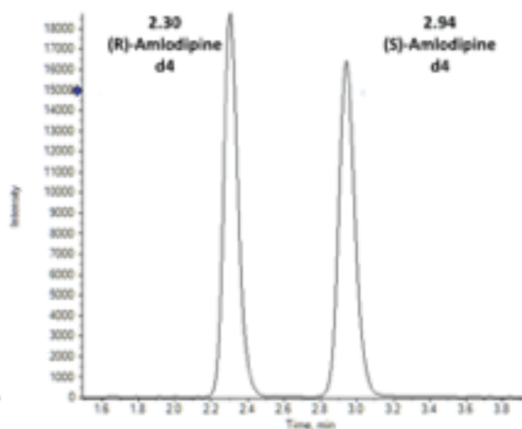
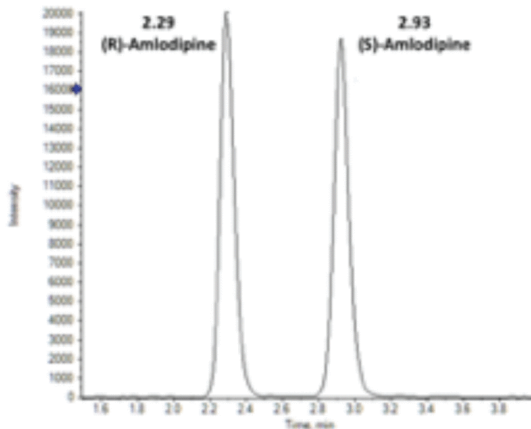
Step No.	Time (min)	Pct A
1	0	100
2	4	100

**Profile:**

**Flow Rate:** 0.3 mL/min  
**Col. Temp.:** 25 °C  
**Detection:** LC/MS/MS @ 0.0000000000 (ambient)



Products used in this application:



### ANALYTES:

- (R)-Amlodipine  
Retention Time: 2.29 min
- (R)-Amlodipine-d4  
Retention Time: 2.3 min
- (S)-Amlodipine  
Retention Time: 2.93 min
- (S)-Amlodipine-d4  
Retention Time: 2.94 min



# Sample Preparation Details

for HPLC Application ID No.: 25531

## LC-MS/MS Chromatogram for Amlodipine Enantiomers and Internal Standards

### PRODUCT DESCRIPTION:

Strata<sup>TM</sup>-X 33  $\mu$ m Polymeric Reversed Phase, 30 mg / 1 mL, Tubes , 100/Pk

Order No.: 8B-S100-TAK

### SOLID PHASE EXTRACTION (SPE) PROCEDURE:

**Note:** The solvent volumes shown below are for a bed mass.

The solvent volumes will need to be adjusted for a smaller or larger bed mass.

#### Condition:

---

#### Load:

---

5  $\mu$ L of internal standard working solution was added to 100  $\mu$ L spiked human plasma (spiked at 0.050, 0.150, 20.0, 40.0, and 50.0 ng/mL) and mixed, 500  $\mu$ L of 0.2% (v/v) Ethanolamine in water was added to sample and vortexed.

#### Wash:

---

#### Dry:

---

#### Elute:

---

#### Final Prep and Analysis:

---

Inject: 10  $\mu$ L on HPLC LC/MS/MS @ 0.0000000000 (ambient)

ANALYTES:	Spiked Conc. (ng/mL)	Log P	pKa	% Rec	%RSC (n=0)
1 (R)-Amlodipine	0				
2 (R)-Amlodipine-d4	0				
3 (S)-Amlodipine	0				
4 (S)-Amlodipine-d4	0				

**Note:** This method is designed as a convenient starting point for further investigation and can be tailored to meet your extraction goals.  
Call your local Phenomenex Representative for assistance in method development and optimization techniques.

©2025 Phenomenex Inc. All rights reserved.

For more information contact your Phenomenex Representative at [info@phenomenex.com](mailto:info@phenomenex.com)



Phenomenex products are available worldwide.

[www.phenomenex.com.cn](http://www.phenomenex.com.cn)

[info@phenomenex.com](mailto:info@phenomenex.com)