

GC Application

ID No.: 25558

ASTM 6730 on ZB-PONA 100m x 0.25mm x 0.5um with ZB-PONA tuning 5m x 0.25mm x 1.0mm

Column: Zebron ZB-DHA-PONA, GC Cap. Column 100m x 0.25mm x 0.5um , Ea

Phase:

Dimensions: 100 meters x 0.25 mm x 0.5 µm

Order No: 7MG-G042-17

Oven Profile: 30°C for 8.5 min to 48°C @ 22°C/min 48°C for 27 min to 141°C @ 3°C/min 141°C for 1 min to 275°C @ 1°C/min 275°C for 2 min

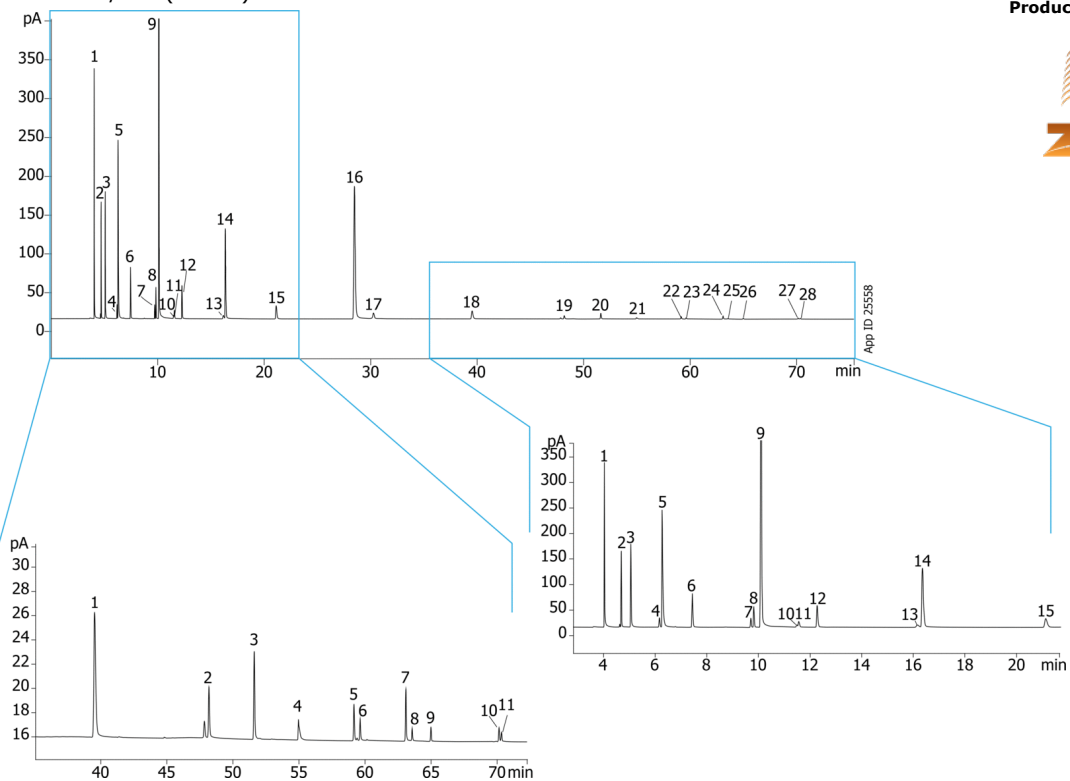
Carrier Gas: Constant Flow Hydrogen, 2 mL/min

Injection: Split 150:1 0.2 µL @ 200°C

Detection: GC/FID (275°C)



Products used in this application:



ASTM 6730 on ZB-PONA 100m x 0.25mm x 0.5um with ZB-PONA tuning 5m x 0.25mm x 1.0mm

ANALYTES:

- 1** Ethanol
- 2** C5 (n-pentane)
- 3** 2-Methylbutane
- 4** Tert-Butanol
- 5** 2,3-Dimethylbutane
- 6** Methyl tert-butyl ether (MTBE)
- 7** C6 (n-hexane)
- 8** 1-Methylcyclopentene
- 9** Benzene
- 10** Cyclohexane
- 11** 3-Ethylpentane
- 12** trans-1,2-Dimethylcyclopentane
- 13** C7 (n-heptane)
- 14** 2,3,3-Trimethylpentane
- 15** Toluene
- 16** C8 (n-octane)
- 17** Ethylbenzene
- 18** 2,3-Dimethylheptane
- 19** p-Xylene
- 20** C9 (n-nonane)
- 21** 5-Methylnonane
- 22** 1-Methyl-2-ethylbenzene
- 23** C10 (n-decane)
- 24** C11 (undecane)
- 25** 1,2,3,5-Tetramethylbenzene
- 26** Naphthalene
- 27** C12 (dodecane)
- 28** 1-Methylnaphthalene
- 29** C13 (Tridecane)

