

Kinetex PS C18 100 % Aqueous Stability Test

Column: Kinetex® 2.6 µm PS C18 100 Å, LC Column 50 x 4.6 mm, Ea

Dimensions: 50 x 4.6 mm ID

Order No: 00B-4780-E0

Elution Type: Isocratic

Eluent A: 20mM Potassium Phosphate Monobasic pH 2.5

Gradient	Step No.	Time (min)	Pct A
Profile:	1	10	100

Flow Rate: 1.5 mL/min

Col. Temp.: 30 °C

Detection: LC/UV (DAD, PDA) @ 270.000000000 nm (nanometers) (ambient)

Analyst Note: Primary Scientist: Sy Do

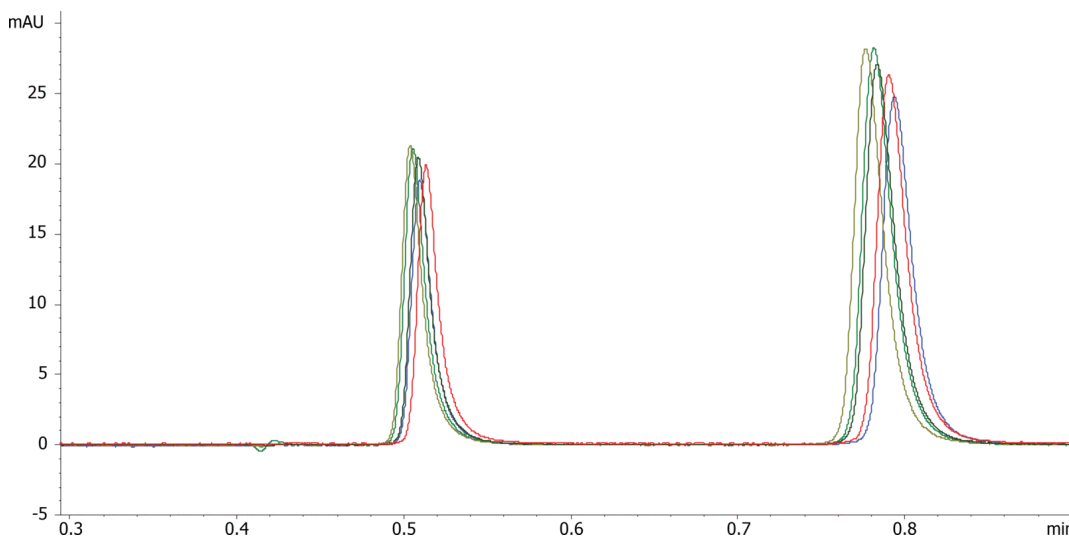
Supporting Scientist: Tran

Stock: Epinephrine: 1mg/ml and Dopamine: 1mg/ml in buffer

The final sample is a mixture of the two stock sample solutions and final conc is at 0.5 mg/mL.



Products used in this application:



ANALYTES:

1 Epinephrine

Retention Time: 0.51 min

2 Dopamine

Retention Time: 0.794 min

