

## 4b) Sulfonic Acid Esters on Luna Omega Polar C18 - ammonium formate

**Column:** Luna Omega 1.6 um Polar C18 100 A LC Column 50 x 2.1 mm, Ea

**Dimensions:** 50 x 2.1 mm ID

**Order No:** 00B-4748-AN

**Elution Type:** Gradient

**Eluent A:** 10 mM ammonium formate in water

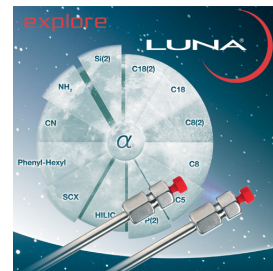
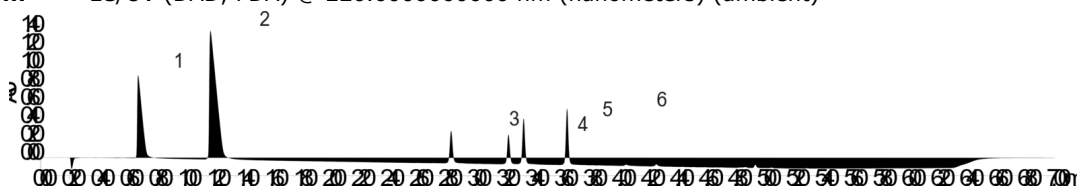
**Eluent B:** Methanol

Gradient Profile:	Step No.	Time (min)	Pct A	Pct B
	1	0	98	2
	2	5	10	90
	3	5.1	10	90
	4	6	98	2
	5	7	98	2

**Flow Rate:** 0.6 mL/min

**Col. Temp.:** 25 °C

**Detection:** LC/UV (DAD, PDA) @ 220.000000000 nm (nanometers) (ambient)



Products used in this application:



### ANALYTES:

- 1 Benzenesulfonic acid
- 2 p-toluene sulfonic acid
- 3 Methylbenzene sulfonate
- 4 Ethyl benzene sulfonate
- 5 Methyl p-toluene sulfonate
- 6 Ethyl p-toluene sulfonate

