

HPLC Application

ID No.: 25604

5a) Sulfonic Acid Esters on Luna Omega Polar C18 - formic acid

Column: Luna Omega 1.6 um Polar C18 100 A LC Column 50 x 2.1 mm, Ea

Dimensions: 50 x 2.1 mm ID

Order No: 00B-4748-AN

Elution Type: Gradient

Eluent A: 0.1% formic acid in water

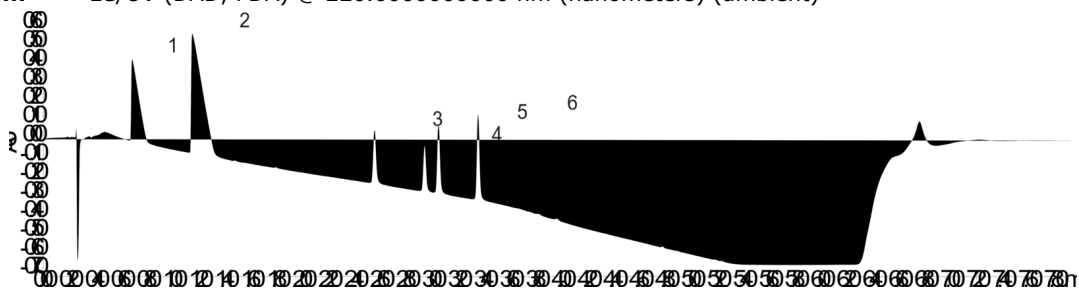
Eluent B: Methanol

| Gradient Profile: | Step No. | Time (min) | Pct A | Pct B |
|-------------------|----------|------------|-------|-------|
| | 1 | 0 | 98 | 2 |
| | 2 | 5 | 10 | 90 |
| | 3 | 5.1 | 10 | 90 |
| | 4 | 6 | 98 | 2 |
| | 5 | 7 | 98 | 2 |

Flow Rate: 0.6 mL/min

Col. Temp.: 25 °C

Detection: LC/UV (DAD, PDA) @ 220.000000000 nm (nanometers) (ambient)



Products used in this application:



ANALYTES:

- 1 Benzenesulfonic acid
- 2 p-toluene sulfonic acid
- 3 Methylbenzene sulfonate
- 4 Ethyl benzene sulfonate
- 5 Methyl p-toluene sulfonate
- 6 Ethyl p-toluene sulfonate

