

Signature Peptides of Rituximab on a bioZen Peptide XB-C18 Column Using bioZen MagBeads

Column: bioZen™ 2.6 µm Peptide XB-C18, LC Column 50 x 2.1 mm, Ea

Dimensions: 50 x 2.1 mm ID

Order No: 00B-4768-AN

Elution Type: Gradient

Eluent A: 0.1% Formic acid in Water

Eluent B: 0.1% Formic acid in Acetonitrile

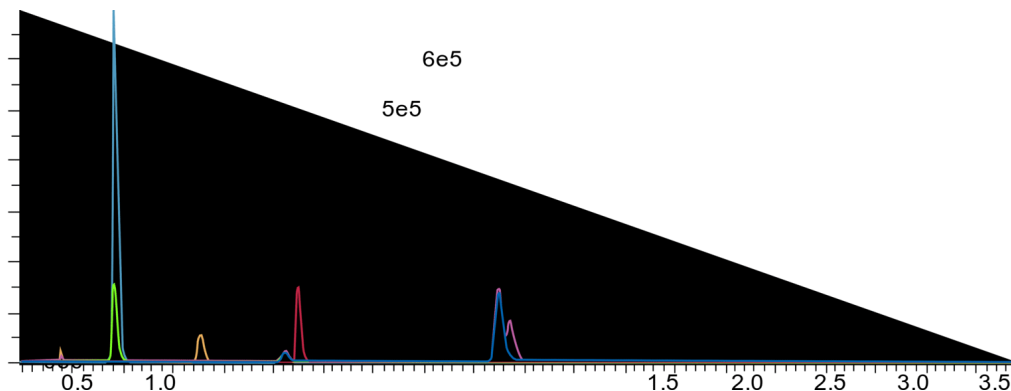
Gradient Profile:	Step No.	Time (min)	Pct A	Pct B
	1	0	85	15
	2	4.5	75	25

Flow Rate: 0.3 mL/min

Col. Temp.: 40 °C

Detection: LC/MS @ (ambient)

Analyst Note: *Rat



ANALYTES:



Sample Preparation Details

for HPLC Application ID No.: 25617

Signature Peptides of Rituximab on a bioZen Peptide XB-C18 Column Using bioZen MagBeads

PRODUCT DESCRIPTION:

bioZen MagBeads, Streptavidin Coated - 500mg, Ea

Order No.: KS0-9533

SOLID PHASE EXTRACTION (SPE) PROCEDURE:

Note: The solvent volumes shown below are for a bed mass.

The solvent volumes will need to be adjusted for a smaller or larger bed mass.

Condition:

Load:

steps 1-25 = bead activation ☐ steps 26-31 = immunocapture ☐ steps 32-42 = wash and elution

Wash:

Dry:

Elute:

Final Prep and Analysis:

Inject: 1 µL on HPLC LC/MS @ (ambient)

ANALYTES:	Spiked Conc. (ng/mL)	Log P	pKa	% Rec	%RSC (n=0)
------------------	---------------------------------	--------------	------------	--------------	-----------------------

Note: This method is designed as a convenient starting point for further investigation and can be tailored to meet your extraction goals.
Call your local Phenomenex Representative for assistance in method development and optimization techniques.

©2025 Phenomenex Inc. All rights reserved.

For more information contact your Phenomenex Representative at info@phenomenex.com



Phenomenex products are available worldwide.

www.phenomenex.com.cn

info@phenomenex.com