

Methanol/Acetonitrile (100:0) Impact on Phenyl Selectivity for Kinetex 2.6 µm Phenyl-Hexyl

Column: Kinetex® 2.6 µm Phenyl-Hexyl 100 Å, LC Column 50 x 4.6 mm, Ea

Dimensions: 50 x 4.6 mm ID

Order No: 00B-4495-E0

Elution Type: Gradient

Eluent A: 0.1% Formic acid in Water

Eluent B: 0.1% Formic acid in Methanol

Gradient Profile:	Step No.	Time (min)	Pct A	Pct B
	1	0	85	15
	2	4	5	95

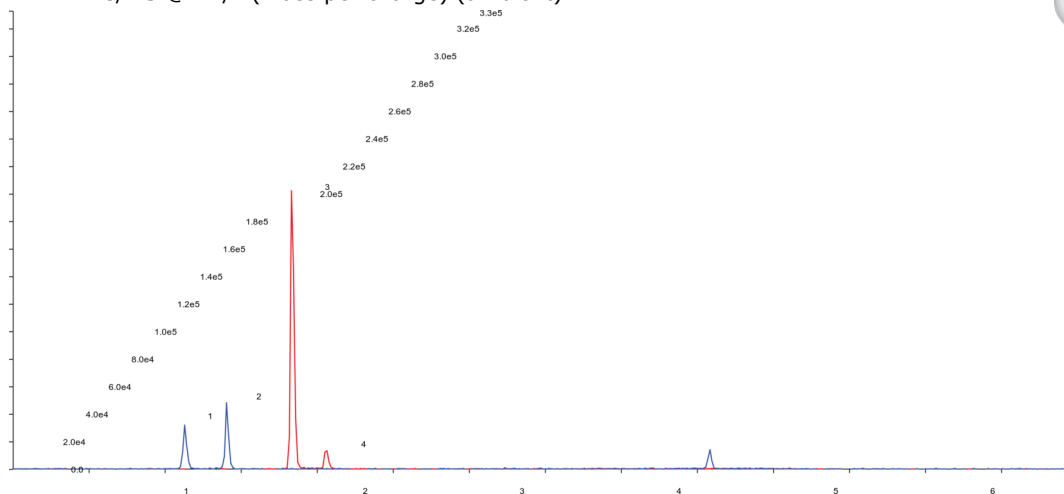
Flow Rate: 800 µL/min

Col. Temp.: ambient

Detection: LC/MS @ m/z (mass per charge) (ambient)



Products used in this application:



ANALYTES:

- 1** Morphine
Retention Time: 1.13 min
- 2** Hydromorphone
Retention Time: 1.41 min
- 3** Codeine
Retention Time: 1.83 min
- 4** Hydrocodone
Retention Time: 2.06 min

