

# HPLC Application

ID No.: 25667

## Ivermectin and Related Substances Test Solution on Luna 3 $\mu\text{m}$ C18(2) 150 x 4.6 mm - Ph. Eur. Monograph 1336

**Column:** Luna<sup>®</sup> 3  $\mu\text{m}$  C18(2) 100  $\text{\AA}$ , LC Column 150 x 4.6 mm, Ea

**Dimensions:** 150 x 4.6 mm ID

**Order No:** 00F-4251-E0

**Elution Type:** Isocratic

**Eluent A:** Water

**Eluent B:** Methanol

**Eluent C:** Acetonitrile

Gradient Profile:	Step No.	Time (min)	Pct A	Pct B	Pct C
	1	0	15	34	51

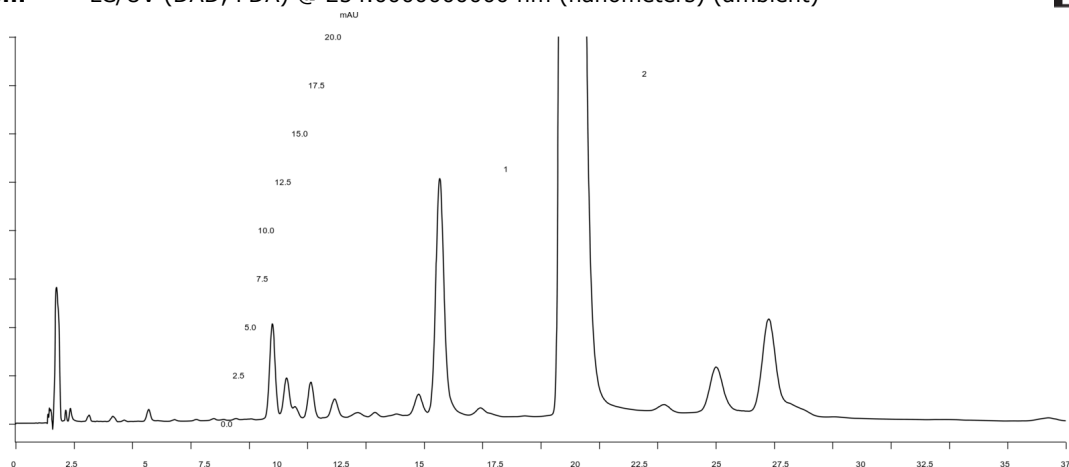
**Flow Rate:** 1 mL/min

**Col. Temp.:** 25  $^{\circ}\text{C}$

**Detection:** LC/UV (DAD, PDA) @ 254.000000000 nm (nanometers) (ambient)



Products used in this application:



### ANALYTES:

1 H2B1b

Retention Time: 18.188 min

2 H2B1a

Retention Time: 23.673 min

